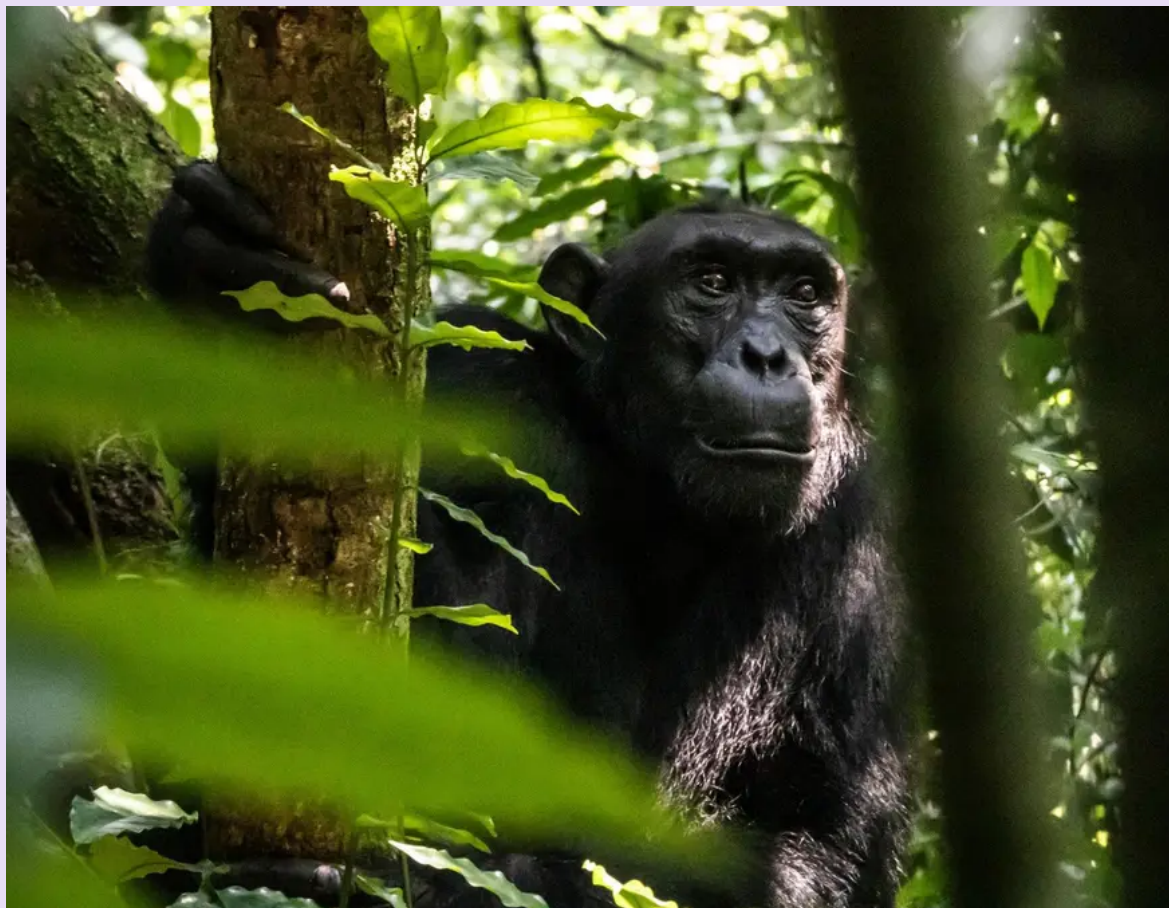


!
x

Sorry! There are no remaining departures for "Kenya to Rwanda: The Maasai Mara, Gorillas & Chimps" (DKMU), [but here are some similar trips](#).



Kenya to Rwanda: The Maasai Mara, Gorillas & Chimps

14 days, Nairobi to Kigali

Trip code DKMU

What's included

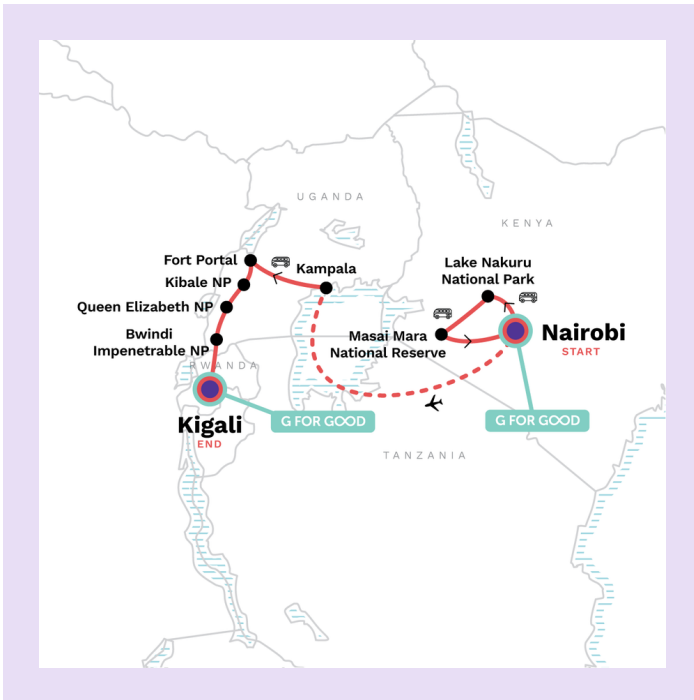
- Your G for Good Moment: Amani Ya Juu Lunch, Nairobi
- Your G for Good Moment: Nyamirambo Women's Centre, Local Lunch, Kigali
- Your Welcome Moment: Meet Your CEO and Group
- Lake Nakuru sunset safari drive
- Maasai Mara village visit and national park safari
- Full-day Maasai Mara National Park Safari
- Free time in Lake Nakuru National Park
- Guest farm stay near Kibale National Park
- Chimpanzee trek
- Bigodi community lunch
- Queen Elizabeth National Park wildlife safari drives
- Guided gorilla trekking in Bwindi Impenetrable National Park
- Visit to Kigali Genocide Museum
- All national park fees and trekking permits
- Internal flight between Nairobi and Kampala
- All transport between destinations and to/from included activities

The information in this trip details document has been compiled with care and is provided in good faith. However it is subject to change, and does not form part of the contract between the client and G Adventures. The itinerary featured is correct at time of printing. It may differ slightly to the one in the brochure. Occasionally our itineraries change as we make improvements that stem from past travellers, comments and our own research. Sometimes it can be a small change like adding an extra meal along the itinerary. Sometimes the change may result in us altering the tour for the coming year. Ultimately, our goal is to provide you with the most rewarding experience. Please note that our brochure is usually released in November each year. If you have booked from the previous brochure you may find there have been some changes to the itinerary.

VERY IMPORTANT: Please ensure that you print a final copy of your Trip Details to review a couple of days prior to travel, in case there have been changes that affect your plans.

VALIDITY: Valid for all trips departing April 6th, 2026 and onwards

Itinerary



NOTE: Accommodations vary per departure and are subject to change until tour start date; they are not final and should be used as examples only. Travellers may login to the G Adventures App to view accommodations specific to their departure.

Day 1

Nairobi

Arrive at any time. Attend a welcome meeting in the evening where you will get to know our fellow group members and meet your CEO.



Accommodation

Kingfisher Nest Hotel Suites (or similar)

Hotel



Today's Activities

ACTIVITY

Your opportunity to meet your CEO and fellow travellers, and learn more about your tour. Opt to join the group for a local meal afterwards. Don't forget to see the notice in the lobby (or ask reception) for the official time and place to meet up with the group.

Day 2

Nairobi/Nakuru

Enjoy breakfast at the hotel in Nairobi then travel by private vehicle to Lake Nakuru National Park. Enjoy an included lunch at the lodge before heading out on a sundown safari drive inside the park in search of the area's wildlife. Return to the lodge in the afternoon, then join the group for dinner on the property.



Meals included

Breakfast | Lunch | Dinner



Accommodation

Lake Nakuru Lodge (or similar)

Lodge



Today's Activities

Private Vehicle

Nairobi – Lake Nakuru National Park

3h30m

162km

Settle in and scan the scenery from the convenience of a private vehicle.

Lake Nakuru Wildlife Safari Drive

Lake Nakuru National Park

Search for, buffalo, impalas, hyenas, and even lions and leopards on the wildlife safari drive in this renowned national park. Head to the shores of Lake Nakuru to see pelicans and cormorants. The park is also rich in other bird life, including grebes, white winged black terns, stilts, avocets, and ducks.

Day 3

Nakuru

Rise early as the sun is just beginning to colour the sky and enjoy a morning safari drive into Lake Nakuru National Park. Return to the lodge for lunch before enjoying free time to explore the area. You can choose to embark on another safari drive into the park this afternoon or simply relax at the lodge property. Dinner is included at the lodge tonight.



Meals included

Breakfast | Lunch | Dinner



Accommodation

Lake Nakuru Lodge (or similar)

Lodge



Today's Activities

Morning Lake Nakuru Wildlife Safari Drive

Lake Nakuru National Park

Embark on a morning safari drive into Lake Nakuru National Park as the animals are going about their daily routines and observe the beauty of your surroundings.

Free Time

Nakuru

Take advantage of a free half-day in the Lake Nakuru National Park area. Choose to go on another safari drive into the park or simply enjoy the lodge's amenities.



Optional Activities - Day 3

Lake Nakuru Afternoon Safari Drive

Lake Nakuru National Park

Considered one of the best national parks in the mighty Rift Valley, Lake Nakuru National Park is also a UNESCO World Heritage Site. Most famous for colonies of flamingos living on the shores of the park's namesake lake, you are likely to see a variety of protected wildlife while on open-air safari drive here. Think black and white rhinos and plenty of bird species. This experience comes later in the day when you can enjoy slightly fewer vehicles on the trail and animals often heading to watering holes or returning from whatever mid-day shade they could find.

Day 4

Nakuru/Masai Mara

After breakfast at the lodge the group will travel to Masai Mara National Park and arrive around lunch time. Head out on a visit to Masai Village and then an afternoon safari drive outside of the Maasai Mara National Park on a private concession to search for giraffe, zebra, hyena, antelope, lions, leopards, rhinos, buffalos & elephants as you enjoy the beautiful scenery. Return to the lodge, relax, and have dinner in the evening.



Meals included

Breakfast | Lunch | Dinner



Accommodation

Kenia Safari Camp Cottages (or similar)

Safari Lodge



Today's Activities

Maasai Village Visit

Masai Mara

Experience the rare opportunity to visit a Maasai village. Step inside a hut made of cow dung and sticks, let your eyes adjust to the dark, and imagine living in such a small space. Admire the exquisite beaded necklaces, bracelets, and earrings worn by both the men and women. Marvel at the athletic ability of the young men who jump and bob in greeting. Learn about the traditions of these nomadic people, who seek sustenance from both the blood and milk of their cows. Have your camera ready for some fantastic photo opportunities.

Private Vehicle

Lake Nakuru National Park – Masai Mara

4h

246km

Settle in and scan the scenery from the convenience of a private vehicle.

Wildlife Safari Drive

Masai Mara

You are in one of the world's top safari destinations, known for its abundance of big cats – cheetahs, leopards and lions – as well as the two million wildebeest, Thomson's gazelles and zebra that migrate annually across the vast grasslands in search of water. Set off on safari with our driver/guide on a private concession near the reserve and keep your eyes and ears peeled for movement and memories. Watch elephants and giraffe grazing, photograph zebras and wildebeest and, with a little luck, you'll even spot animals feasting on a recent kill.

Day 5

Masai Mara

This morning choose to pre-book an early morning safari drive or a hot air balloon safari over the plains of Masai Mara. Then, set out on a full day safari drive. Search for wildlife and enjoy this beautiful part of Kenya. Gather for a packed lunch before arriving at your tented camp area in the later afternoon. Spend the night in this tented camp amid the sounds of the plains.



Meals included

Breakfast | Lunch | Dinner



Accommodation

Kenia Safari Camp Cottages (or similar)

Safari Lodge



Today's Activities

Full Day Masai Mara Wildlife Safari Drive

Masai Mara

Enjoy a full day in the Greater Mara Ecosystem, renowned for its exceptional wildlife viewing opportunities. This is where the Great Migration brings millions of wildebeest, zebra, and gazelle across the plains. It's also known for its high density of predators, including lions, leopards, and cheetahs. The diverse landscape, from rolling grasslands to riverine forests, provides stunning vistas and an unforgettable drive.



Optional Activities - Day 5

Masai Mara Balloon Safari

Masai Mara

Choose to pre-book a Hot Air Balloon safari over the plains of the Maasai Mara. Your balloon adventure ends with a delicious breakfast. Float above the Mara plains in a dimension of unsurpassed tranquillity and beauty. The hot air balloon lifts you into the clear blue sky at dawn and gives you an eagle's view of the wildlife pageant below. You will glide over the treetops with the early birds and be wafted gently over the plains, above the bustle and bumps of the ground below, but cruising close to enjoy the spectacular scenery.

Balloon Flight Times

Pickup at 05:00

Flight at 06:00

Morning Masai Mara Wildlife Safari Drive

Masai Mara

Enter the park early in the morning to witness the magnificent wildlife as the first light begins to glow over the land.

Day 6

Masai Mara/Nairobi

In the morning leave camp and begin to travel back to Nairobi on a route that allows you to spot some wildlife as you exit the area. Stop along the way for lunch at a G Adventure-supported community project. Arrive back to Nairobi and attend an optional group dinner this evening at a nearby local restaurant.



Meals included

Breakfast | Lunch



Accommodation

Kingfisher Nest Hotel Suites (or similar)

Hotel



Today's Activities

Private Vehicle

Masai Mara - Nairobi

6h30m

Settle in and scan the scenery from the comfort of your private vehicle. As you leave the camp you will have a chance to see wildlife on the route taken from the camping area. There will be a stop outside of Nairobi for lunch at a G Adventures-supported community initiative.

ACTIVITY

In the post-colonial era of East and Southern Africa, Kenya found itself as a refuge for many women who were seeking safety. As a result, a very special G Adventures for Good supported project, Amani ya Juu, was created. Amani ya Juu serves as a community where many of these women can learn entrepreneurship and engage in fair trade activities that allow them to create opportunities for themselves and their families. By creating unique handicrafts symbolic of their cultures, the women can express themselves and receive an impactful income, leading to economic independence. Here you'll enjoy a locally sourced lunch prepared by women and youth of the community, engage in conversation to learn of their history, and build a greater connection with this incredible program.

Day 7

Nairobi/Kampala

Catch a flight this morning from Nairobi to Kampala. Enjoy free time to become settled and explore the city on your own before the next part of the adventure begins tomorrow.



Meals included

Breakfast



Accommodation

Canary Hotel (or similar)

Hotel



Today's Activities

Plane

Nairobi - Kampala

1h15m-1h30m

Sit back and enjoy the short flight between Nairobi and Kampala.

Free Time

Kampala

The bustling, vibrant city of Kampala, Uganda, offers a wealth of opportunities for free-time exploration. You might choose to dive into the city's rich history with a visit to the Kasubi Tombs, a UNESCO World Heritage site and the burial ground of the Buganda kings, or explore the impressive Bahá' í Temple, the only one of its kind in Africa. For a taste of local life, wander through the colorful stalls of the Owino Market, a massive open-air bazaar. Alternatively, find a quiet moment at the serene Lake Victoria or simply relax at a local café, soaking in the energetic atmosphere of Uganda's capital.

Day 8

Kampala/Fort Portal

Take the scenic route to Fort Portal at the edge of Kibale National Park. Spend the night on a guest farm listening to the sounds of monkeys and birds.

Accommodation in Fort Portal is on a farm in simple furnished tents with shared bathroom facilities.



Meals included

Breakfast | Lunch | Dinner



Accommodation

Kluges Guest Farm (or similar)

Lodge



Today's Activities

Private Vehicle

Kampala - Fort Portal

4h-6h

297km

Settle in and scan the scenery from the convenience of a private vehicle.

Day 9

Kibale National Park

Explore the evergreen rainforest and trek to spot chimps in the morning or afternoon. Enjoy a traditional lunch in the Bigodi Community.

Opt to venture deep into the wetlands to spot more wildlife on a guided walk through the Bigodi Wetlands Sanctuary.



Meals included

Breakfast | Lunch | Dinner



Accommodation

Kluges Guest Farm (or similar)

Lodge



Today's Activities

Chimpanzee Trek

Kibale National Park

1h-2h

Embark on a chimp trek with a park ranger/guide. See more than just chimpanzees in their natural environment. Learn about the ecosystem and keep an eye out for other animals. Although chimp sightings are not guaranteed, visitors stand a good chance of hearing and seeing our distant cousins as they are not bothered by humans watching their daily behaviour.

Bigodi Community Lunch

Kibale National Park - Bigodi

1h-1h30m

Sit down to a traditional buffet-style lunch prepared with fresh, organic local ingredients. Guests dine in a grass thatched hut and learn about Bigodi dining etiquette. Your local hosts describes how the ingredients used in the dishes are grown, harvested and prepared.



Optional Activities - Day 9

Bigodi Swamp Walk

Bigodi

20USD

Take a guided walk through the Bigodi wetlands. On your tour, you will likely see several kinds of monkeys including black and white colobus, red colobus, mangabey, red tail, vervet, and L'Hoest. Other wetlands mammals include baboons, sitatunga (an increasingly endangered swamp antelope), bush

pigs, civet cats, mongooses, bush bucks and an occasional chimpanzee. The area also boasts an incredible bird population. Walking poles are provided, subject to availability. If you require poles, we suggest bringing your own.

Day 10

Kibale NP/Queen Elizabeth NP

Continue on to Queen Elizabeth NP, stopping at the equator. Head out on a wildlife safari drive in the afternoon. Keep your eyes peeled for warthogs, elephants, buffalo, five different species of primates, and hippos.

Queen Elizabeth National Park is characterized by open savannah, large areas of swamp around Lake George, the extensive Maramagambo Forest in the southeast, and the forested Kyambura Gorge along the border with Kyambura Game Reserve.

Tonight's accommodation is located on a hill, on the border of Queen Elizabeth National Park. It offers spectacular views of Lake George and the savannah plains.



Meals included

Breakfast | Dinner



Accommodation

Simba Safari Camp (or similar)

Campground



Today's Activities

Private Vehicle

Kibale National Park – Queen Elizabeth National Park

3h

115km

Settle in and scan the scenery from the convenience of a private vehicle.

Queen Elizabeth National Park Wildlife Safari Drive

Queen Elizabeth National Park

Enjoy a wildlife safari drive inside Queen Elizabeth National Park. The park is home to Uganda's largest wildlife populations. Keep an eye out for buffalo, elephants, hippos, hyenas, lions, warthogs, and the elusive leopards.

Day 11

Queen Elizabeth National Park

Take an early morning wildlife safari drive and enjoy lunch inside the park. Opt for an evening cruise along the Kazinga Channel.

Enjoy a wildlife safari drive with possible sightings of buffaloes, waterbucks, warthogs, lions, leopards, hyenas, giant forest hogs, and elephants.



Meals included

Breakfast | Lunch | Dinner



Accommodation

Simba Safari Camp (or similar)

Campground



Today's Activities

Queen Elizabeth National Park Wildlife Safari Drive

Queen Elizabeth National Park

Enjoy a wildlife safari drive inside Queen Elizabeth National Park. The park is home to Uganda's largest wildlife populations. Keep an eye out for buffalo, elephants, hippos, hyenas, lions, warthogs, and the elusive leopards.

Free Time

Queen Elizabeth National Park

Don't waste a minute– start exploring.



Optional Activities - Day 11

Kazinga Channel Cruise

Queen Elizabeth National Park

30USD

Take a boat cruise on the Kazinga Channel, a waterway inside Queen Elizabeth National Park that connects Lake George and Lake Edward. Look out for a variety of wildlife who are drawn to the channel shores. Spot birds, crocodiles, hippos, and reptiles.

Day 12

Queen Elizabeth NP/Bwindi Impenetrable NP

Enjoy the scenic drive south, with views of forests, volcanoes and lakes. Spend the night on the edge of Bwindi Impenetrable National Park.

Accommodation at Bwindi Impenetrable NP is in simple furnished tents/rooms with ensuite bathroom facilities.



Meals included

Breakfast



Accommodation

Rushaga Gorilla Camp (or similar)

Campground



Today's Activities

Private Vehicle

Queen Elizabeth National Park - Bwindi Impenetrable National Park

5h-6h

200km

Settle in and scan the scenery from the convenience of a private vehicle.

Rise early for the tour's main highlight – gorilla trekking!

Head into Bwindi Impenetrable National Park to meet the park ranger/guide for orientation. Embark on the trek, which can vary in length and difficulty, depending on the location of the gorilla family that's being visited. Spend 1 hr (max) observing these beautiful and endangered creatures, a truly privileged experience. Trek back and return to town. Enjoy free time in the afternoon.

Bwindi Impenetrable National Park has four areas; Rushaga, Buhoma, Nkuringo, Ruhija. Depending on permit availability your group could be tracking gorillas from different areas of the park, it is all still part of Bwindi.



Meals included

Breakfast



Accommodation

Rushaga Gorilla Camp (or similar)

Campground



Today's Activities

Mountain Gorilla Trek

Bwindi Impenetrable National Park

1h-6h

Take an unforgettable guided trek (1-6 hrs) deep into volcano forests of Bwindi Impenetrable National Park for a wildlife encounter of a lifetime, and meet a family of mountain gorillas. One of Africa's major highlights, a close encounter with these amazing animals is simply breathtaking.

Get prepared before heading out: bring plenty of water and waterproof clothing (it can rain on only a few minutes' notice), and be sure to bring protective bags for cameras and film. Dress in layers with long sleeves and long pants to protect against stinging nettles found in the forests. The trek's often chilly, at first, until you start trekking.

Note: Ugandan authorities are fiercely protective of this natural treasure, and currently permit only a maximum of eight people, per day, to visit a given gorilla family. The group will be split into different

sub-groups for the trek, and depending on the number of travellers, different sub-groups may do their trek on different days.

Bwindi Impenetrable National Park has four areas; Rushaga, Buhoma, Nkuringo, and Ruhija. Depending on permit availability your group could be tracking gorillas from different areas of the park, it is all still part of Bwindi.

Free Time

Bwindi Impenetrable National Park

Depending on when you get back from your gorilla trek, you may have some time to explore more of the area.



Optional Activities - Day 13

Porter Hire

20USD

Hire a local porter to carry your day pack throughout the trek, giving you more ease on your journey.

Cross the border into Rwanda, then head to the capital city, Kigali. Visit the genocide museum to learn more about the dark history of this fascinating country. Enjoy lunch at the G Adventures supported Nyamirambo Women's Centre.

The tour ends following lunch at Nyamirambo Women's Centre. Please book onward flights no earlier than 6pm.



Meals included

Breakfast | Lunch



Today's Activities

Border Crossing (Uganda - Rwanda)

Gatuna Border Post

1h-1h30m

Ready for a little more ink in your passport? Grab your bags and get ready to check another country off your bucket list.

Private Vehicle

Bwindi Impenetrable National Park - Kigali

4h30m-5h30m

175km

Settle in and scan the scenery from the convenience of a private vehicle.

Kigali Genocide Memorial Visit

Kigali

2h

Visit the Kigali Genocide Memorial Centre, which serves as a permanent memorial to those who fell victim to the genocide in 1994. The centre opened on the tenth anniversary of the Rwandan Genocide, in April 2004, and was built on a site where more than 250,000 people are buried.

Please note that content at the Memorial Centre shows the harsh reality of the genocide.

ACTIVITY

Located in Nyamirambo, the largest and most vibrant township in Rwanda, the centre provides women and girls from a diverse range of backgrounds, the opportunity to support each other and succeed, through education and training programs. Enjoy lunch prepared by women employed at the centre, allowing us to try local foods and popular dishes. After lunch, take some time to browse the centre's

shop, which features handmade, high-quality crafts and clothes, made by some of the women at the shop, as well as other women's cooperatives throughout Rwanda. Proceeds from the meal and shop help support the centre's education and training programs, including a community library.

Departure Day

Not ready to leave? Your CEO can help with travel arrangements to extend your adventure.

What's included

- Your G for Good Moment: Amani Ya Juu Lunch, Nairobi
- Your G for Good Moment: Nyamirambo Women's Centre, Local Lunch, Kigali
- Your Welcome Moment: Meet Your CEO and Group
- Lake Nakuru sunset safari drive
- Maasai Mara village visit and national park safari
- Full-day Maasai Mara National Park Safari
- Free time in Lake Nakuru National Park
- Guest farm stay near Kibale National Park
- Chimpanzee trek
- Bigodi community lunch
- Queen Elizabeth National Park wildlife safari drives
- Guided gorilla trekking in Bwindi Impenetrable National Park
- Visit to Kigali Genocide Museum
- All national park fees and trekking permits
- Internal flight between Nairobi and Kampala
- All transport between destinations and to/from included activities

What are the main highlights of this trip?

Safari through Lake Nakuru National Park in search of the Big Five, See Kenya's conservation story unfold across its sweeping landscapes, Share lunch with women running a G Adventures-supported craft initiative, Trek deep into the forest to meet a family of mountain gorillas, Set out on foot in Uganda to spot chimps swinging through the canopy, Keep watch for elephants and hippos in Queen Elizabeth National Park

What are the main highlights of this trip?

Safari through Lake Nakuru National Park in search of the Big Five, See Kenya's conservation story unfold across its sweeping landscapes, Share lunch with women running a G Adventures-supported craft initiative, Trek deep into the forest to meet a family of mountain gorillas, Set out on foot in Uganda to spot chimps swinging through the canopy, Keep watch for elephants and hippos in Queen Elizabeth National Park

Is there a disclaimer I should read before booking this trip?

The information in this trip details document has been compiled with care and is provided in good faith. However it is subject to change, and does not form part of the contract between the client and the operator. The itinerary featured is correct at time of printing. It may differ slightly to the one in the brochure. Occasionally our itineraries change as we make improvements that stem from past travellers, comments and our own research. Sometimes it can be a small change like adding an extra meal along the itinerary. Sometimes the change may result in us altering the tour for the coming year. Ultimately, our goal is to provide you with the most rewarding experience. Please note that our brochure is usually released in November each year. If you have booked from the previous brochure you may find there have been some changes to the itinerary.

VERY IMPORTANT: Please ensure that you view a final copy of your Trip Details a couple of days prior to travel, in case there have been changes that affect your plans.

Is there an itinerary Disclaimer?

While it is our intention to adhere to the route described below, there is a certain amount of flexibility built into the itinerary and on occasion it may be necessary, or desirable to make alterations. The itinerary is brief, as we never know exactly where our journey will take us. Due to our style of travel and the regions we visit, travel can be unpredictable. The Trip Details document is a general guide to the tour and region and any mention of specific destinations or wildlife is by no means a guarantee that they will be visited or encountered. Aboard expedition trips visits to research stations depend on final permission.

Additionally, any travel times listed are approximations only and subject to vary due to local circumstances.

What important notes should I be aware of before the trip?

1. AGE RESTRICTIONS

Please note that all passengers must be aged 15 years or older (prior to start of travel) to go on this tour - there are no exceptions to this as it is for safety reasons and strictly controlled by the Government.

2. PHYSICAL REQUIREMENT

This trip is rated a level 4 physical requirement - travellers should be in excellent physical condition, without any heart problems and prepared to spend strenuous days in humid rain forests, steep terrain and high altitude trekking for chimpanzee and gorillas, as well as other primates. Please ensure you meet the requirements as described under "physical rating".

3. TRAVEL DAYS

Travelling can be difficult, as long drives and poor road conditions are the rule as opposed to the exception in both Rwanda and Uganda. Despite this, the diversity and scenery of the African landscape, the local culture and abundant wildlife are all well worth the experience.

4. WILDLIFE SIGHTINGS

G Adventures can never guarantee the sighting of wildlife, especially when it comes to mountain gorillas. However, the mountain gorilla trek is organized to ensure success. Before heading into the jungle, our local guides receive coordinates from trackers on the whereabouts of the gorillas, and the trackers stay with the gorillas until the group arrives.

5. ACCOMMODATION

Much of the accommodation on this tour is in simple furnished tents with shared bathroom facilities.

Please remember that this is a developing area and as such, accommodations/service may not be of similar standard to which you are used to in your home country. As well, interruptions in electricity and water can be common. We appreciate your patience and understanding, as well as your sense of adventure.

Please be aware that properties we stay in with only two stories may not have elevators installed and climbing the stairs with your luggage will be necessary.

6. ILLNESS

Please note that if you are unwell with anything contagious, even a common cold, you may be denied any of the treks to ensure the safety of the gorillas and chimps. This is a national park regulation, and trekking permits will not be refunded if you are denied entrance due to illness.

7. CAMERAS

As it is very dark and damp in the jungle; please ensure your camera equipment is appropriate for such conditions and that you bring dry bags to protect it.

8. ELECTRICITY

The power supply in Uganda and Rwanda is nominally 240VAC, 50hz. Variable voltage, spikes and sporadic, unexpected, unscheduled power cuts of varying duration can be expected.

9. YELLOW FEVER

Please be advised that it will be required to show a yellow fever certificate upon entering Uganda and Rwanda.

10. Bwindi Impenetrable National Park has four areas; Rushaga, Buhoma, Nkuringo, Ruhija. Depending on permit availability your group could be tracking gorillas from different areas of the park, it is all still part of Bwindi.

11. TREKKING

Please inform your CEO in advance if you would like to rent gaiters for the treks. The cost is approximately \$10 USD. Walking sticks will be provided.

12. COMBO TOUR

Please note that this tour combines with other G Adventures tours. As such, the staff and some travel companions on your tour may have previously been traveling together with G Adventures, prior to Day 1 of your tour. Likewise, some staff and travel companions may be continuing together on another G Adventures tour, after your trip concludes.

13. YELLOW FEVER

It may be required to show a Yellow Fever certificate upon entering the country(s) visited. Please check in with your local health expert for advice on Yellow Fever and other inoculations required for this area.

What is the group leader like?

For the safari portion of this G Adventures group trip itinerary, you will be accompanied by one of our group leaders, otherwise known as a Chief Experience Officer (CEO). The aim of the group leader is to take the hassle out of your travels and to help you have the best trip possible. They will provide information on the places you are travelling through, offer suggestions for things to do and see, recommend great local eating venues and introduce you to our local friends. While not being guides in the traditional sense you can expect them to have a broad general knowledge of the countries visited on the trip, including historical, cultural, religious and social aspects.

We also use local guides where we think more specific knowledge will add to the enjoyment of the places we are visiting - we think it's the best of both worlds.

The CEO (Chief Experience Officer) will be the group manager and leader. He/she organizes the trip, and will be there to assist you when needed. He/she will take care of the small things so you can concentrate on enjoying your adventure. All of our CEOs in East Africa are experienced group leaders, with a broad knowledge base of the region's history, cultures, and wildlife. Your leader will be from either southern or East Africa depending on which part of the tour you are on.

During the trek in Bwindi Impenetrable National Park, we use an experienced and certified tracking guide, and armed guards to accompany you for your safety.

We also use local guides for some included activities where we think more specific knowledge will add to the enjoyment of the places we are visiting.

How large will the group be?

Max 14, avg. 8

What meals are included in this trip?

13 breakfasts, 9 lunches, 8 dinners

What are the meals like on this trip?

Vegetarian meals and other dietary requirements need to be specified prior to arrival. Please note all bottled drinking water will be at your own expense.

What are the modes of transportation on my trip?

4x4 safari vehicles, Private van, walking, plane.

What transportation will we take on this trip?

The safari part of this trip is done in private, 7-seat 4x4 Land cruiser vehicles. With sliding windows and a large pop-up roofs, these vehicles are designed for wildlife viewing. If there is a large group, 2 or more vehicles will be used, and the group will be split up.

All G Adventures vehicles are regularly serviced and follow a strict maintenance schedule. However given the long travel days and rough conditions of many of the roads in Africa, vehicles can and do breakdown on occasion. If such situations occur all drivers are trained mechanics and any vehicle issues are rectified as quickly as possible so as to not disrupt your trip. Your patience is requested if the vehicle you are traveling in happens to encounter a mechanical fault.

This is not a physically demanding journey; however, travelling can be difficult, with long drives and poor road conditions at times. Please take note of the travel times and distances in the above itinerary, and consider that this is often on poor quality, bumpy roads. Despite this, most clients feel that the diversity of the African landscape, culture and wildlife are all well worth the experience.

Is there an extra cost for travelling solo?

We believe solo travellers should not have to pay more to travel so our group trips are designed for shared accommodation and do not involve a single supplement. Single travellers joining group trips are paired in twin or multi-share accommodation with someone of the same sex for the duration of the trip. Some of our Independent trips are designed differently and solo travellers on these itineraries must pay the single trip price.

Where will we stay during the trip?

Hotels (3 nts), Lodges (2 nts), Safari Camp Cottages (2 nts), Simple furnished tents/rooms (6 nts).

Will I get my own room?

Please note that if you have booked the "My Own Room" option for this tour, you will receive your own single room for all night stops

What kind of accommodation can I expect on this trip?

In Uganda and Rwanda, hotel accommodation will be in simple, but comfortable twin-share rooms. All rooms are equipped with adequate mosquito netting (with the exception of your hotel in Musanze, where mosquito nets are not needed due to high-altitudes).

Tented accommodation will be in simple furnished tents on wooden platforms, with shared bathroom facilities. All tents are large, walk-in tents with mosquito-netting, two beds and provided linens. A sleeping bag or extra mosquito-netting is not needed for this tour.

Please remember that this is a developing area and as such, accommodations/service may not be of similar standard to which you are used to in your home country. As well, interruptions in electricity and water can be common. We appreciate your patience and understanding as well as your sense of adventure.

What is the joining hotel?

For details of your joining hotel please refer to your tour voucher, G Account, the G Adventures App or contact your travel agent.

What are the joining instructions?

For details of your joining hotel please refer to your tour voucher, G Account, the G Adventures App or contact your travel agent.

If you would like to book an airport Arrival transfer for your tour, please contact our Sales Team or your Travel Agent in advance of travel.

If you have paid in advance for an arrival transfer, a G Adventures representative will be at the airport to meet you. If for any reason you are not met at the airport, please call our local support line. If you are unable to make contact for whatever reason, please make your way to the joining point hotel via taxi.

Please note that day 1 is an arrival day and no activities have been planned on this day.

Upon arrival to your Joining Hotel (note that check-in time will be in the afternoon), look for a note or bulletin board in the reception with a note from your CEO. This note will give the details of your Welcome Meeting on day 1 (usually between 5pm and 7pm), where you will get a chance to meet your CEO and other travellers, as well as learn more about how the tour will run. If you don't see a note, please ask reception for details!

If you are arriving later and will miss the Welcome Meeting, your CEO will leave a note at reception for you with any information you may need, and with morning instructions for the next day.

What happens if I experience problems when arriving?

We don't expect any problems, and nor should you, but if for any reason you are unable to commence your trip as scheduled, please refer to the emergency contact details provided in this dossier and contact us as soon as possible. If you have a pre-booked transfer, and you have not made contact with our representative within 30 minutes of clearing customs and immigration, we recommend that you make your own way to the Starting Point hotel, following the Joining Instructions. Please apply to your travel agent on your return for a refund of the transfer cost if this occurs.

Who should I contact in case of an emergency?

Should you need to contact us during a situation of dire need, it is best to first call either the G Adventures Local Representative (if one is listed below) or our G Adventures Local Office. If for any reason you do not receive an immediate answer, please leave a detailed message and contact information, so they may return your call and assist you as soon as possible.

AIRPORT TRANSFER

If you have purchased an arrival through G Adventures or if an arrival transfer is included in the cost of your tour, please note that:

Your arrival transfer has been arranged based on flight information provided to us. If you are advised of a flight schedule change or flight cancellation within 48 hours of your scheduled arrival time, please call the emergency contact number to advise of your new arrival flight information. If you do not, we will not be able to rearrange your arrival transfer and you will need to make your own way to the starting hotel at your own expense. If your arrival transfer does not arrive within 30 minutes after you have exited the arrivals area please take a taxi to your start point hotel.

For any issues relating to pre-booked transfers for Nairobi Jomo Kenyatta International Airport, including delays or missed transfers, please contact our airport transfer operator:

Phelix: +254 729 692 653 (from outside of Kenya)

Phelix: 0729 692 653 (from within Kenya)

EMERGENCY CONTACT NUMBERS

G Adventures Local Office (Nairobi, Kenya)

G Adventures Local Representative (Rwanda)

Robert: +250 784 744 586

From outside Kenya: +254 727 208 832

From within Kenya: 0727 208 832

G Adventures Local Representative (Zanzibar)

Mr Salum Muhidin: +255 773 258 773 (Operations Manager)

If you are unable for any reason to contact our local office, please call the numbers listed below which will connect you directly with our Sales team who will happily assist you. Hours of operation by region can be found [here](#).

Toll-free, North America only: 1 888 800 4100

Calls from UK: 0344 272 0000

Calls from Germany: 0800 365 1000

Calls from Australia: 1 300 796 618

Calls from New Zealand: 0800 333 307

Outside North America, Australia, New Zealand, Germany and the UK: +1 416 260 0999

Are there any additional packing suggestions I should consider?

You will be on the move a lot, so our advice is to pack as lightly as possible. Your baggage should be clearly labelled and restricted to one soft compact suitcase, sports bag, or backpack, no larger than 30cm(height) x 30cm(width) x 60cm(length), maximum 15kg, plus a daypack.

A set of smart casual clothes is also advisable.

You will be on the move a lot, so our advice is to pack as lightly as possible. Your baggage should be clearly labelled and restricted to one soft compact suitcase, sports bag, or backpack, of medium size, as well as a day pack.

On this trip you may experience several types of weather. It is important to pack clothes for warm days and cool evenings. Light, quick-drying, practical clothes are advisable for this trip.

Your clothes will in all likelihood get very muddy and may not recover to their original state - therefore take old clothing for trekking. Hard wearing clothes, no bright colours, or no army camouflage clothing should be worn. Greens, khaki and similar neutral clothes are recommended.

What should be on my packing list?

Cold weather:

- Long-sleeved shirts or sweater
- Scarf
- Warm gloves
- Warm hat
- Warm layers

Documents:

- Flight info (required) (Printouts of e-tickets may be required at the border)
- Insurance info (required) (With photocopies)
- Passport (required) (With photocopies)
- Vouchers and pre-departure information (required)
- Visas or vaccination certificates (With photocopies)

Essentials:

- Toiletries (required) (Shampoo, bodywash, soap, etc.)
- Binoculars (optional)
- Camera (With extra memory cards and batteries)
- Cash, credit and debit cards
- Day pack (Used for daily excursions or short overnights)
- Ear plugs
- First-aid kit (should contain lip balm with sunscreen, sunscreen, whistle, Aspirin, Ibuprofen, bandaids/plasters, tape, anti-histamines, antibacterial gel/wipes, antiseptic cream, Imodium or similar tablets for mild cases of diarrhea, rehydration powder, water purification tablets or drops, insect repellent, sewing kit, extra prescription drugs you may be taking)
- Flashlight/torch (Headlamps are ideal)
- Fleece top/sweater
- Footwear
- Hat
- Headphones (Noise-cancelling recommended)
- Locks for bags
- Long pants/jeans
- Moneybelt
- Outlet adapter
- Personal entertainment (Reading and writing materials, cards, music player, etc.)
- Reusable water bottle
- Shirts/t-shirts
- Sleepwear
- Small travel towel
- Sunglasses
- Swimwear
- Watch and alarm clock
- Waterproof backpack cover
- Windproof rain jacket

Gorillas:

- Gardening gloves (Highly recommended for gorilla trekking)
- Neutral coloured clothing (Your clothes will likely get very muddy - therefore take old clothing for the gorilla trekking. No bright colours should be worn. Greens, khaki and similar neutral clothes are recommended)

Health & Safety:

- Face masks (Clients will be only be required to wear a face mask where it is mandated by local regulations.)
- Hand sanitizer
- Pen (Please bring your own pen for filling out documents.)

Hiking/Trekking:

- Gloves
- Hat
- Hiking boots/sturdy walking shoes
- Hiking pants (Convertible/Zip-off and quick dry recommended)
- Snacks (Protein bars, chocolate, dried fruits, candies, energy sweets)
- Socks (Trekking socks – woollen or synthetic, not cotton)
- Thermal base layer (Woollen or synthetic, not cotton)
- Walking poles (Highly recommended)

Warm Weather:

- Sandals/flip-flops
- Shorts/skirts (Longer shorts/skirts are recommended)
- Sturdy water shoes/sandals
- Sun hat/bandana
- Swimwear Note: The climate in East Africa varies between the dry and rainy season. Please ensure you bring a windproof rain jacket if you are travelling between April & May, October & November. Please be aware that towels will not be provided during this trip. We encourage you to pack your own towel. Trekking poles will be provided if you choose not to pack your own.

When can I do my laundry on this trip?

Laundry facilities are offered by some of our hotels for a charge. There will be times when you may want to or have to do your own laundry so we suggest you bring non-polluting/biodegradable soap.

What are the visas and entry requirements for my trip?

All countries require a valid passport (with a minimum 6 months validity). Contact your local embassy or consulate for the most up-to-date visa requirements, or see your travel agent. It is your own responsibility to have the correct travel documentation. Visa requirements for your trip will vary depending on where you are from and where you are going. We keep the following information up to date as far as possible, but rules do change and sometimes without warning. While we provide the following information in good faith, it is vital that you check the information yourself and understand that you are fully responsible for your own visa requirements.

Visa information specific to your destination and nationality can be found in our Important Pre-Departure Information page [here](#)

Kenya:

As of January 1st 2024, the Kenyan government announced the introduction of a new Electronic Travel Authorisation (eTA) scheme, eliminating the requirement for all nationalities to obtain a visitor visa for Kenya. ALL travellers must apply for the eTA, including those that were previously exempt.

For more information, please refer to the eTA site [here](#)

IMPORTANT NOTE:

It may be required to show a Yellow Fever certificate upon entering the country. Please check in with your local consulate and health expert for advice on Yellow Fever and other inoculations required for this area.

Information is accurate as of March 1st, 2024.

How much spending money do I need for my trip?

Every traveller is different and therefore spending money requirements will vary. Some travellers may drink more than others while other travellers like to purchase more souvenirs than most. Please consider your own spending habits when it comes to allowing for drinks, shopping and tipping. Please also remember the following specific recommendations when planning your trip.

What should I know about currency, credit cards, and exchanging money while on this tour?

The local currency in Kenya is the Kenyan Shilling (KES, or KSH). The local currency in Rwanda is the Rwanda Franc. In Uganda it is the Ugandan Shilling.

There are several foreign exchange bureaus in Kigali offering similar rates, the most widely accepted currency is US\$. Your CEO will inform you where you can change money throughout the tour and approximately how much money you will need for each country. That said - most everything is included in this tour - we recommend that you bring enough USD cash with you, to cover for any additional drinks/snacks and souvenir shopping.

The easiest foreign currency to exchange for locally for any of the local currencies is the \$US; however the British Pound and Euro may also be exchanged as well. Please note that due to past problems with forgery, \$US notes that are older than year 2006 are not accepted in Africa. Larger note (\$US 50, \$US 100 etc) can be difficult to change in some places, but will gain you the best exchange rate.

If you plan to buy your visas at borders, you will need to bring \$USD cash to pay for these visas. Please note you cannot use the local currency or any other currency to buy these visas- they must be purchased in USD.

Please do not bring Travellers' cheques to Africa. They are difficult if not impossible to exchange in many places.

Visa/Plus system cards are the most widely accepted debit cards. It is harder to find machines Mastercard/Cirrus cards. We highly recommend that if you hold a Mastercard, you obtain a Visa card prior to departure and travel with both. This is also useful should something unforeseen happen to one of your cards during your travels. While there are many ATMs in the major centres, there are no guarantees that your credit or debit cards will actually work in Africa. Check with your bank.

Credit cards can be used in major cities and towns ONLY but please do not rely on them as a method of payment because they are generally not widely accepted. You should be aware that to purchase products or services on a credit card a fee of 5%-10% usually applies. The majority of our optional activities can also be paid by credit card. Your CEO will advise on these.

Please note that in many areas there may be occasional power-outages, where there will be no electricity for hours at a time. In addition, ATMs outside of larger centers often run out of cash or can be out of order unexpectedly. These factors could affect your ability to access money from ATMs. As such, please do not rely on credit or debit cards as your only source of money.

A combination of foreign currency and debit/credit cards for cash advances is best. Always take more rather than less, as you don't want to spoil the trip by constantly feeling short of funds.

As currency exchange rates can fluctuate often we ask that you refer to the following website for daily exchange rates: www.xe.com.

How much emergency money should I bring on this trip?

Please also make sure you have access to at least an additional USD \$200 (or equivalent) as an 'emergency' fund, to be used when circumstances outside our control (ex. a natural disaster) require a change to our planned route. This is a rare occurrence!

Do I need to pay a departure tax?

USD40, usually included in most international air tickets.

Should I be tipping on my trip?

Tipping is an expected, though not compulsory, component of your tour program. The gesture serves as an expression of appreciation for exceptional service, and amounts given are up to your discretion.

Tipping is one of the most direct ways that you can have a positive economic impact within the African community. Although it may not be customary for you, it is an important source of income for those in the tourism industry. Giving a tip should be seen as a formal 'thank you', and the action should in no way be awkward.

The best method of tipping someone that has served the whole group is to plan in advance, and not rush when it comes to saying goodbye. A suggestion would be for each group member to contribute anonymously by putting their tip into an envelope. This often works the best and the group should gather to present the gift to the recipient(s), offering their thanks and showing their appreciation. This method brings the action out into the open, allowing for a friendly and appreciative interaction between the group and the recipient(s).

You may use the following as a guideline, all given in a per person format:

G CEOs and drivers: \$3-4 USD each, per day worked.

Trekking Guides in Uganda and Rwanda:

Certified Safari Guide/Driver: \$10-15 USD (full day)

Restaurant/Café servers: 10% of cost of bill, especially when in a large group (no envelope required).

Local guides: \$1 USD for every couple of hours

What activities are optional on this trip?

Lake Nakuru National Park

- Lake Nakuru Afternoon Safari Drive

Masai Mara

- Masai Mara Balloon Safari
- Morning Masai Mara Wildlife Safari Drive

Bigodi

- Bigodi Swamp Walk (20USD per person)

Queen Elizabeth National Park

- Kazinga Channel Cruise (30USD per person)

Bwindi Impenetrable National Park

- Porter Hire (20USD per person)

Are there any health considerations I should know before travelling?

We recommend you contact your family physician, or your local travel clinic for the most up-to-date health information at least one month before departure. Travellers should also carry a basic first-aid kit and hand sanitizers/antibacterial wipes on their travels. Medical facilities are basic throughout these countries. For your own safety, we strongly recommend that you advise your tour leader of any medical condition that may affect you while travelling with the group. Your tour leader will be able to inform you of local health advisories (e.g. drinking water quality). Please ensure you have all the inoculations recommended by your doctor.

Yellow Fever Certificate Note: (Updated: May 2023)

It is compulsory to show a valid Yellow Fever Certificate if you are travelling to the following G Adventures-visited countries from a Yellow Fever endemic country:

- Botswana
- Ethiopia
- Kenya
- Madagascar
- Malawi
- Mozambique
- Rwanda
- South Africa
- Swaziland
- Uganda
- Zambia
- Zimbabwe

For some of these countries, proof of Yellow Fever vaccination is also required for passengers who have travelled more than 12 hours through the airport of an endemic country. If other countries not endemic to Yellow Fever have been visited after visiting an endemic country, then a Yellow Fever certificate may still be required on entry. Please check country-specific regulations before your departure.

Malaria

Malaria is a mosquito-borne disease that is present in some regions in Africa. Risk of malaria can increase during periods of heavy rain, during the rainy seasons, and in densely populated areas of Southern & East Africa. To prevent malaria, we recommend speaking to your doctor about taking preventative medication (prophylaxis), combined with regular use of insect repellent spray/cream. Please check updated travel health advisories specific to malaria before your departure.

What do I need to know to about safety and security on my trip?

Many national governments provide a regularly updated advice service on safety issues involved with international travel. We recommend that you check your government's advice for their latest travel information before departure. We strongly recommend the use of a neck wallet or money belt while travelling, for the safe keeping of your passport, air tickets, travellers' cheques, cash and other valuable items. Leave your valuable jewellery at home - you won't need it while travelling. Many of the hotels we use have safety deposit boxes, which is the most secure way of storing your valuables. A lock is recommended for securing your luggage. When travelling on a group trip, please note that your group leader has the authority to amend or cancel any part of the trip itinerary if it deemed necessary, due to safety concerns. Your Chief Experience Officer (CEO) will accompany you on all included activities. During your trip you will have some free time to pursue your own interests, relax and take it easy and explore at your leisure. While your CEO will assist you with options available in a given location, please note that any optional activities you undertake are not part of your itinerary, and we offer no representations about the safety of the activity or the standard of the operators running them. Please use your own good judgement when selecting an activity in your free time. Although the cities visited on tour are generally safe during the day, there can be risks to wandering throughout any major city at night. It is our recommendation to stay in small groups and to take taxis to and from restaurants, or during night time excursions.

Water based activities have an element of danger and excitement built into them. We recommend only participating in water based activities when accompanied by a guide(s). We make every reasonable effort to ensure the fun and adventurous element of any water based activities (in countries with varying degrees of operating standards), have a balanced approach to safety. It is our policy not to allow our CEOs to make arrangements on your behalf for water based activities that are not accompanied by guide(s).

Swimming, including snorkeling, is always at your own risk. [Read more about travel safety](#) for ways to further enhance your personal safety while traveling.

What are the trip specific safety considerations?

Cities

Please exercise caution in the cities and always take a pre-arranged taxi if you go out at night.

Trekking/safari

At all times, please abide by all National park/reserve rules and always follow interactions from guides/trackers specifically, these are set to not just protect the wildlife but also to protect you.

Photography

Please refrain from taking photos of police stations, airports, bus stations, immigration or border crossings, army barracks and personnel, or any government building. It is against the law and will result in the minimum of your film and camera being confiscated.

What rules should I know before joining this trip?

Illegal drugs will not be tolerated on any trips. Possessing or using drugs not only contravenes the laws of the land but also puts the rest of the group at risk. Smoking marijuana and opium is a part of local culture in some parts of the world but is not acceptable for our travellers. Our philosophy of travel is one of respect towards everyone we encounter and in particular the local people who make the world the special place it is. The exploitation of people in the sex trade is completely contrary to this philosophy. Our CEOs have the right to expel any member of the group if drugs are found in their possession or if they utilize the services of paid sex workers, in any capacity.

Is travel insurance required for my trip?

Travel insurance is compulsory in order to participate on any of our trips. When travelling on a group trip, you will not be permitted to join the group until evidence of travel insurance has been sighted by your leader, who will take note of your insurance details. When selecting a travel insurance policy we require that at a minimum you are covered for medical expenses including emergency evacuation and repatriation. A minimum coverage of USD200,000 is required. We strongly recommend that the policy also covers personal liability, cancellation, curtailment and loss of luggage and personal effects. Some tours include adventure activities that require extra coverage (e.g. crampon use); please review your itinerary and make sure that you are covered for all included activities. If you have credit card insurance we require proof of purchase of the trip (a receipt of credit card statement) with a credit card in your name. Contact your bank for details of their participating insurer, the level of coverage and emergency contact telephone number.

What is Planeterra?

Planeterra International Foundation is a non-profit organization committed to turning travel into impact by helping local communities earn an income from tourism. Planeterra connects underserved local communities to the benefits of tourism by developing and supporting small community-owned businesses. These businesses support Indigenous people, empower women, grant youth access to employment opportunities, and protect the environment. Planeterra also works to ensure these businesses have a thriving customer base by integrating their projects into G Adventures' itineraries globally.

G Adventures is Planeterra's largest corporate donor, covering all operating costs, so 100% of your donation will bring opportunity to people in need.

G Adventures Dollar-a-day Program - Make Every Day Count - Turn your travel into impact with [Planeterra Foundation](#).

Did you know? Most communities around the world do not benefit from tourism. Give back to the places you visit on your travels by creating opportunities for local people to earn an income, and protect the environment.

Make every day count by donating \$1/day for the length of your trip, and join us in empowering the communities you will visit when you travel. 100% of your donation goes directly to Planeterra projects.

How can I share feedback about my trip experience?

Earn 5% off your next G Adventures Tour (up to \$100 USD)*

After your travels, we want to hear from you! Your feedback information is so important to us and to thank you for your time, we are pleased to offer a 5% discount (up to a maximum of \$100 USD) off your next G Adventures holiday. All you need to do is submit the form within 4 weeks of the completion of your tour, and you'll be able to join the thousands of travellers who have taken 2, 3, 4 or even 10 or more tours with us!

Discount cannot be combined with other offers or applied to 'Independent' style trips. Maximum discount value is \$100 USD (or equivalent currency). Valid for new bookings only. G Adventures reserves the right to withdraw or modify this offer at any time without notice. Limited to one discount per person.

Does G Adventures have an email newsletter I can subscribe to?

Our adventure travel e-newsletter is full of travel news, trip information, interesting stories and contests. To avoid missing out on special offers and updates from G Adventures, subscribe at www.gadventures.com/newsletters/

Stay current on how our company invests in our global community through our foundation – Planeterra. Sign up for [Planeterra's monthly news](#) to learn more about how to give back and support the people and places we love to visit.

Are international flights included in this trip?

No, international flights are generally not included in the price of your tour.

However, on some combo tours travelling between two different countries, international flights are included as part of the itinerary and price of the tour. Please speak to your GCO or booking agent for further details.

In addition, check-in times and baggage allowances/restrictions vary by airline and can change at any time. For the most up-to-date information for your flight, please contact your airline. We recommend checking in online in advance to avoid potential delays at the airport.

What should LGBTQ+ travellers know about safety and travel considerations on this trip?

The safety and well-being of all of our travelers is a priority at G Adventures and that includes our travelers who identify as part of the LGBTQ+ community. We recognize that there are specific concerns and questions you may have about your adventure in terms of safety and security. We encourage you to visit our [LGBTQ+ page](#) for useful resources to ensure you feel safe and comfortable throughout the duration of your trip. The Equaldex tool linked on this page can be of particular help when deciding where you may want to visit next.

Dossier Disclaimer

The information in this trip details document has been compiled with care and is provided in good faith. However it is subject to change, and does not form part of the contract between the client and the operator. The itinerary featured is correct at time of printing. It may differ slightly to the one in the brochure. Occasionally our itineraries change as we make improvements that stem from past travellers, comments and our own research. Sometimes it can be a small change like adding an extra meal along the itinerary. Sometimes the change may result in us altering the tour for the coming year. Ultimately, our goal is to provide you with the most rewarding experience. Please note that our brochure is usually released in November each year. If you have booked from the previous brochure you may find there have been some changes to the itinerary.

VERY IMPORTANT: Please ensure that you print a final copy of your Trip Details to review a couple of days prior to travel, in case there have been changes that affect your plans.

Itinerary Disclaimer

While it is our intention to adhere to the route described below, there is a certain amount of flexibility built into the itinerary and on occasion it may be necessary, or desirable to make alterations. The itinerary is brief, as we never know exactly where our journey will take us. Due to our style of travel and the regions we visit, travel can be unpredictable. The Trip Details document is a general guide to the tour and region and any mention of specific destinations or wildlife is by no means a guarantee that they will be visited or encountered. Aboard expedition trips visits to research stations depend on final permission.

Additionally, any travel times listed are approximations only and subject to vary due to local circumstances.