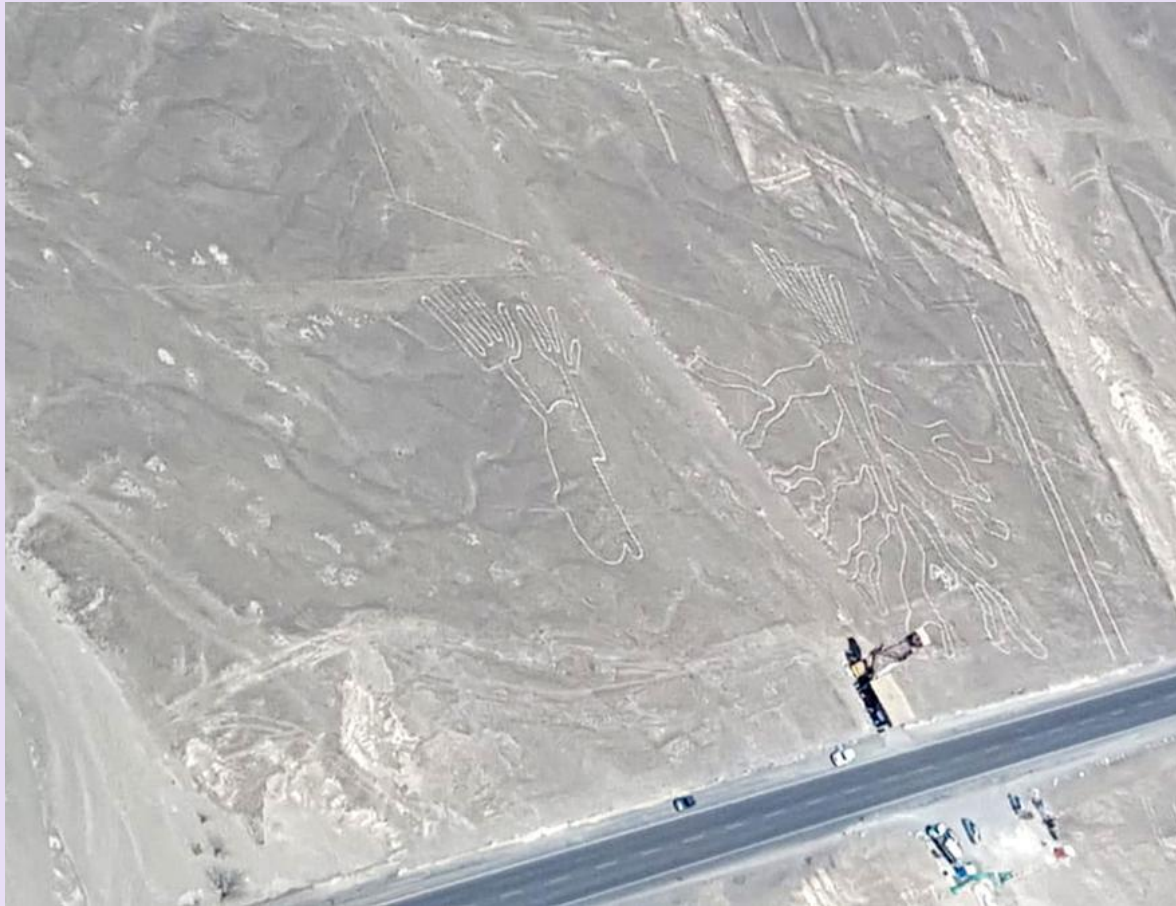


!  
x

Sorry! There are no remaining departures for "Paracas & Nazca Lines Independent Adventure" (TSPNLN), [but here are some similar trips.](#)



## **Paracas & Nazca Lines Independent Adventure**

3 days, Lima to Lima

Trip code TSPNLN

## What's included

- Flight over the Nazca Lines
- Local bus to and from Paracas
- Visit to the Paracas National Reserve
- Transfers to and from Lima hotel
- Ballestas Islands excursion

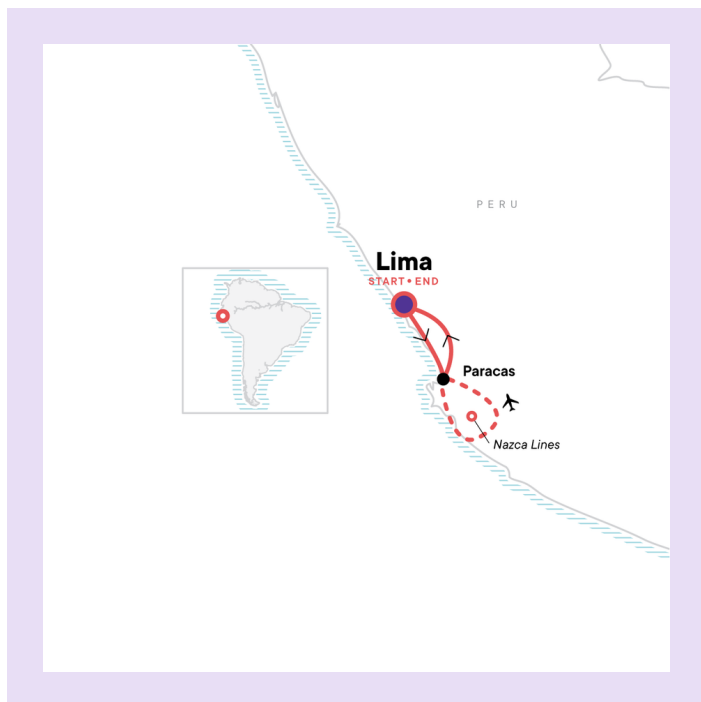
The information in this trip details document has been compiled with care and is provided in good faith. However it is subject to change, and does not form part of the contract between the client and G Adventures. The itinerary featured is correct at time of printing. It may differ slightly to the one in the brochure. Occasionally our itineraries change as we make improvements that stem from past travellers, comments and our own research. Sometimes it can be a small change like adding an extra meal along the itinerary. Sometimes the change may result in us altering the tour for the coming year. Ultimately, our goal is to provide you with the most rewarding experience. Please note that our brochure is usually released in November each year. If you have booked from the previous brochure you may find there have been some changes to the itinerary.

**VERY IMPORTANT:** Please ensure that you print a final copy of your Trip Details to review a couple of days prior to travel, in case there have been changes that affect your plans.

**VALIDITY:** Valid for all trips departing January 1st, 2017 and onwards

# Itinerary

---



**NOTE:** Accommodations vary per departure and are subject to change until tour start date; they are not final and should be used as examples only. Travellers may login to the G Adventures App to view accommodations specific to their departure.

Day 1

## Lima/Paracas

Transfer from the hotel in Lima in the early afternoon to start the adventure at the Lima bus station. Arrive in Paracas in the early evening.

Meet a G Adventures representative at your hotel to brief you on the day's events. Transfer to the bus station and hop a local bus for the drive to Paracas.

On arrival, meet a G Adventures representative and head to your Paracas hotel. Learn more about your activities over the next two days.

Please note that hot water shortages and power outages can be fairly common in Peru (even in upgraded hotels and private homes). We appreciate your patience and understanding that these occurrences are outside of our control.



### Today's Activities

Meet and Greet Hotel Welcome Meeting

On Day 1 of the tour, a G Adventures representative will meet you at the hotel to go over the details of the tour, providing a schedule, documentation/vouchers, and pick-up times for all included activities. The representative can also answer any questions about the tour or the general area.

Private Vehicle

Lima

Enjoy a transfer from the hotel to the bus station.

Meet and Greet Hotel Welcome Meeting

Meet your a G Adventures representative in Paracas to learn more about your itinerary.

Local Bus

Lima - Paracas

4h

Climb aboard, grab a seat, and enjoy the ride.

In the morning, take a light aircraft flight over the ancient Nazca Lines for a panoramic view of these mysterious geometric lines. Visit Paracas National Reserve in the afternoon.

---



## Meals included

Breakfast

---



## Today's Activities

Flight over Nazca Lines

Paracas

Take to the skies for the best view of the enigmatic Nazca Lines, a series of patterns and pictures etched in the ground, crisscrossing a wide area of flat desert. Marvel at the lines measuring up to 10km (6 mi) in length, yet, remaining perfectly straight. See depictions of birds, insects, and animals only recognizable from the air. Decide for yourself the origin of the lines – who drew the lines, and why, remains a mystery. Current beliefs suggest that they may be part of complex agricultural calendar.

Paracas National Reserve Visit

Paracas

Head into Paracas National Reserve, a protected area preserving archeological sites, marine and desert ecosystems. Visit the coast to spot wildlife from the shore, groups of flamingos can sometimes be seen feeding in the ocean. Visit an Interpretation centre to learn more about the biodiversity in the area. Continue on to a small museum showcasing pre-Incan archeological history of the Paracas region, home to a variety of human remains including the famed deformed Paracas skulls. Finally, enjoy a lookout over the impressive cathedral rock formation.

Day 3

## Paracas/Lima

In the morning, visit the Ballestas Islands to view a lively sea lion colony, pelicans, penguins, and other varieties of birdlife. Transfer to the bus station for the return journey to Lima. Arrive in the evening to Lima and transfer to the hotel.

A hotel in Lima is not included for the night, we recommend booking a post-night in Lima to allow additional time to explore. If you would like to book post-tour accommodation in Lima or a transfer to the Lima airport we are happy to assist.



### Meals included

Breakfast



### Today's Activities

Ballestas Islands Excursion

Las Ballestas

Visit this group of islands off the Peruvian coast, an excellent place to go wildlife watching. Spot sea lion colonies, Humboldt penguins, and a variety of bird life.

Local Bus

Paracas - Lima

4h

Transfer to the bus station in Paracas for the journey back to Lima. Arrive in the evening. Take an included transfer from the Lima bus station to your Lima hotel.

## What's included

- Flight over the Nazca Lines
- Local bus to and from Paracas
- Visit to the Paracas National Reserve
- Transfers to and from Lima hotel
- Ballestas Islands excursion

## What are the main highlights of this trip?

View the incredible Nazca Lines from the air, visit the city of Nazca and the Chauchilla cemetery

## Is there a disclaimer I should read before booking this trip?

The information in this trip details document has been compiled with care and is provided in good faith. However it is subject to change, and does not form part of the contract between the client and the operator. The itinerary featured is correct at time of printing. It may differ slightly to the one in the brochure. Occasionally our itineraries change as we make improvements that stem from past travellers, comments and our own research. Sometimes it can be a small change like adding an extra meal along the itinerary. Sometimes the change may result in us altering the tour for the coming year. Ultimately, our goal is to provide you with the most rewarding experience. Please note that our brochure is usually released in November each year. If you have booked from the previous brochure you may find there have been some changes to the itinerary.

**VERY IMPORTANT:** Please ensure that you print a final copy of your Trip Details to review a couple of days prior to travel, in case there have been changes that affect your plans.

## Is there an itinerary Disclaimer?

While it is our intention to adhere to the route described below, there is a certain amount of flexibility built into the itinerary and on occasion it may be necessary, or desirable to make alterations. The itinerary is brief, as we never know exactly where our journey will take us. Due to our style of travel and the regions we visit, travel can be unpredictable. The Trip Details document is a general guide to the tour and region and any mention of specific destinations or wildlife is by no means a guarantee that they will be visited or encountered. Aboard expedition trips visits to research stations depend on final permission.

Additionally, any travel times listed are approximations only and subject to vary due to local circumstances.

# What important notes should I be aware of before the trip?

## 1. LOCAL GUIDES

Bilingual guides during day tours and for transfers to and from bus station in Lima and Nazca. Note: Your guide will remain with you until you have boarded your bus for your journey to and from Nazca. Transfers in Lima are included from G Adventures hotels and the airport only.

## 2. FLIGHTS

Please note that the Peruvian government has recently changed some of the regulations regarding which aircraft are allowed to fly over the Nazca Lines. This means that less aircraft, with increased safety measures, are now able to operate this flight. The impact of these changes results in longer wait times to get on a flight for travellers. At peak times it may be necessary to take this flight on the morning of day 3 before returning to Lima.

## 3. DAY 1 EARLY ARRIVAL

If you are arriving by flight on Day 1 of the tour (i.e. you are not being picked up from your Lima hotel on Day 1), the latest arrival flight time into Lima is 7:00am. If you are planning to depart Lima on the final day of the tour, the earliest departure flight you should take is at 11:00pm.

# What meals are included in this trip?

2 breakfasts

# What are the meals like on this trip?

Eating is a big part of traveling. G Adventures understands the importance of breakfast to start your day, we strive to include a basic breakfast wherever possible. A typical breakfast may include toast, coffee and tea, however this may vary depending on the city. Should breakfast not be included, reception at your hotel may be able to suggest some local options.

Travelling with G Adventures you experience the vast array of wonderful food that is available out in the world. Generally meals are not included in the trip price when there is a choice of eating options, to give you the maximum flexibility in deciding where, what and with whom to eat. It also gives you more budgeting flexibility, though generally food is cheap. While trekking in remote regions etc. food is included, plentiful and made of fresh local ingredients.

For all trips please refer to the meals included and budget information for included meals and meal budgets.

# What are the modes of transportation on my trip?

Public bus, private van, light aircraft, walking.

# What transportation will we take on this trip?

Land Transfers & Included Tours/activities: Many of the land transfers and included tours will be by private van, car or taxi, while others may be shared with other travellers depending on availability, nature of the activity and destination. For transfers, you may have a local non English-speaking driver only, for included tours, you will be accompanied by an English speaking local guide.

## **Are local flights included in the cost of the trip?**

All local flights are included in the cost of your tour unless otherwise noted. It is important that we have your passport information at the time of booking in order to process these tickets. Internal flight tickets are issued locally and will be given to you prior to the flight departure.

## **Is there an extra cost for travelling solo?**

We believe single travellers should not have to pay more to travel so our group trips are designed for shared accommodation and do not involve a single supplement. Single travellers joining group trips are paired in twin or multi-share accommodation with someone of the same sex for the duration of the trip. Some of our Independent trips are designed differently and single travellers on these itineraries must pay the single trip price.

## **Where will we stay during the trip?**

Hotels (2 nts).

## **What kind of accommodation can I expect on this trip?**

A variety of accommodation standards are available for Independent tours, see your dossier for the accommodation class specific to your tour. Please remember that hotel/lodge/resort standards can be different from what you are used to in your home country, which is part of the appeal of adventure travel. Porterage is not included, but can be arranged directly at most hotels.

Please note that hot water shortages and power outages can be fairly common in Peru (even in upgraded hotels and private homes). We appreciate your patience and understanding that these occurrences are outside of our control.

## **What is the joining hotel?**

For details of your joining hotel please refer to your tour voucher, G Account, the G Adventures App or contact your travel agent.

## **What are the joining instructions?**

This trip begins and ends in Lima. Accommodation in Lima is not included but can be arranged at the time of booking.

We recommend that you arrive in Lima a day early as most flights arrive late at night and the bus to Nazca departs early in the day. Likewise this tour arrives back in Lima on day 3 late in the day so a post night accommodation may be necessary.

A G Adventures representative will contact you in Lima and brief you about the various aspects of the tour. If you are arriving the day before the trip start date please look for instructions at your hotels reception area. If there is any confusion, please do not hesitate to call the Lima office contact number listed in this dossier.

## What happens if I experience problems when arriving?

We don't expect any problems, and nor should you, but if for any reason you are unable to commence your trip as scheduled, as soon as possible please contact your starting point hotel or refer to the emergency contact details provided in this dossier. If you have pre-booked an airport transfer and have not made contact with our representative within 30 minutes of clearing customs and immigration, we recommend that you make your own way to the Starting Point hotel, following the Joining Instructions. Please apply to your travel agent on your return for a refund of the transfer cost if this occurs.

## Who should I contact in case of an emergency?

Should you need to contact us during a situation of dire need, it is best to first call either the G Adventures Local Representative (if one is listed below) or our G Adventures Local Office. If for any reason you do not receive an immediate answer, please leave a detailed message and contact information, so they may return your call and assist you as soon as possible.

### AIRPORT TRANSFER

If you have purchased an arrival through G Adventures or if an arrival transfer is included in the cost of your tour, please note that:

Your arrival transfer has been arranged based on flight information provided to us. If you are advised of a flight schedule change within 48 hours of your scheduled arrival time, we will do our best to rearrange your arrival transfer however we cannot guarantee this. If your arrival transfer does not arrive within 30 minutes after you have exited the arrivals area please take a taxi to your start point hotel.

### EMERGENCY CONTACT NUMBERS

G Adventures Office Lima, Peru.

During office hours (Weekdays, 9-6pm Local Time): +51 1 241 1650 or 01 241 1650 (from mobile within Peru) or 241 1650 (from payphone within Peru)

After hours Emergency number: +51 99 758 2712, (WhatsApp Available)

If you are unable for any reason to contact our local office, please call the numbers listed below which will connect you directly with our Sales team who will happily assist you. Hours of operation by region can be found [here](#).

Toll-free, North America only: 1 888 800 4100

Calls from UK: 0344 272 0000

Calls from Germany: 0800 365 1000

Calls from Australia: 1 300 796 618

Calls from New Zealand: 0800 333 307

Outside North America, Australia, New Zealand, Germany and the UK: +1 416 260 0999

## What should I take on my trip?

Most people automatically assume that the weather is hot in South America, but because of the higher altitude in the Andes, the temperature can feel quite cold, especially at night. We recommend the use of a duffel bag or backpack, whichever is easiest for you to carry. A good size daypack is also essential.

# What should be on my packing list?

## Documents:

- Flight info (required) (Printouts of e-tickets may be required at the border)
- Insurance info (required) (With photocopies)
- Passport (required) (With photocopies)
- Vouchers and pre-departure information (required)
- Visas or vaccination certificates (With photocopies)

## Essentials:

- Toiletries (required) (Shampoo, bodywash, soap, etc.)
- Binoculars (optional)
- Camera (With extra memory cards and batteries)
- Cash, credit and debit cards
- Day pack (Used for daily excursions or short overnights)
- Ear plugs
- First-aid kit (should contain lip balm with sunscreen, sunscreen, whistle, Aspirin, Ibuprofen, bandaids/plasters, tape, anti-histamines, antibacterial gel/wipes, antiseptic cream, Imodium or similar tablets for mild cases of diarrhea, rehydration powder, water purification tablets or drops, insect repellent, sewing kit, extra prescription drugs you may be taking)
- Flashlight/torch (Headlamps are ideal)
- Fleece top/sweater
- Footwear
- Hat
- Headphones (Noise-cancelling recommended)
- Locks for bags
- Long pants/jeans
- Moneybelt
- Outlet adapter
- Personal entertainment (Reading and writing materials, cards, music player, etc.)
- Reusable water bottle
- Shirts/t-shirts
- Sleepwear
- Small travel towel
- Sunglasses
- Swimwear
- Watch and alarm clock
- Waterproof backpack cover
- Windproof rain jacket

## Health & Safety:

- Face masks (Clients will be only be required to wear a face mask where it is mandated by local regulations.)
- Hand sanitizer
- Pen (Please bring your own pen for filling out documents.)

### **Warm Weather:**

- Sandals/flip-flops
- Sturdy water shoes/sandals
- Shorts/skirts (Longer shorts/skirts are recommended)
- Sun hat/bandana
- Swimwear

## **When can I do my laundry on this trip?**

Laundry facilities are offered by some of our hotels for a charge. There will be times when you may want to or have to do your own laundry so we suggest you bring non-polluting/biodegradable soap. Aboard the expedition ships Explorer and Andrea laundry facilities are provided at a charge. Aboard the Amazon Explorer laundry facilities are provided free of charge for each passenger once a week.

## **What the visas and entry requirements for my trip?**

All countries require a valid passport (with a minimum 6 months validity). Contact your local embassy or consulate for the most up-to-date visa requirements, or see your travel agent. It is your own responsibility to have the correct travel documentation. Visa requirements for your trip will vary depending on where you are from and where you are going. We keep the following information up to date as far as possible, but rules do change and sometimes without warning. While we provide the following information in good faith, it is vital that you check the information yourself and understand that you are fully responsible for your own visa requirements.

Visa information specific to your destination and nationality can be found in our Important Pre-Departure Information page [here](#)

## **How much spending money do I need for my trip?**

Every traveller is different and therefore spending money requirements will vary. Some travellers may drink more than others while other travellers like to purchase more souvenirs than most. Please consider your own spending habits when it comes to allowing for drinks, shopping and tipping. Please also remember the following specific recommendations when planning your trip.

## What should I know about currency, credit cards, and exchanging money while on this tour?

The currency in Peru is the Nuevo Sol (PEN).

Credit cards and debit cards are very useful for cash advances. Visa cards are the most widely accepted cards. While ATMs are widely available, there are no guarantees that your credit or debit cards will actually work in Latin America. Check with your bank.

You should be aware that to purchase products or services on a credit card a fee of 5%-10% usually applies.

Do not rely on credit or debit cards as your only source of money, a combination of US dollar cash and cards is best. Always take more rather than less, as you don't want to spoil the trip by constantly feeling short of funds.

We do not recommend bringing travellers cheques as they are very difficult to change in country.

CURRENCY EXCHANGE TIP: Please be advised that slightly torn notes, notes that have been heavily marked or are faded may be difficult to exchange. It is best to bring notes in fairly good condition, in denominations lower than 100USD (or equivalent).

As currency exchange rates can fluctuate often we ask that you refer to the following website for daily exchange rates: [www.xe.com](http://www.xe.com)

## How much emergency money should I bring on this trip?

Please also make sure you have access to at least an additional USD \$200 (or equivalent) as an 'emergency' fund, to be used when circumstances outside our control (ex. a natural disaster) require a change to our planned route. This is a rare occurrence!

## Should I be tipping on my trip?

It is customary in Latin America to tip service providers such as waiters, and local guide(s) at approximately 10%, depending on the service. Tipping is an expected - though not compulsory - component of your tour program and an expression of satisfaction with the persons who have assisted you on your tour. Although it may not be customary to you, it is of considerable significance to the people who will take care of you during your travels.

## What activities are optional on this trip?

- No optional activities

## **Are there any health considerations I should know before travelling?**

Please note inoculations may be required for the country visited. It is your responsibility to consult with your travel doctor for up to date medical travel information well before departure.

You should consult your doctor for up-to-date medical travel information well before departure. We recommend that you carry a First Aid kit and hand sanitizers / antibacterial wipes as well as any personal medical requirements. Please be aware that quite often we are in remote areas and away from medical facilities, and for legal reasons our leaders are prohibited from administering any type of drug including headache tablets, antibiotics, etc. When selecting your trip please carefully read the brochure and itinerary and assess your ability to cope with our style of travel. Please refer to the Physical and Culture Shock ratings for trip specific information. G Adventures reserves the right to exclude any traveller from all or part of a trip without refund if they are unable to complete the itinerary without undue risk to themselves or others around them.

Please note your Adventure travels to high altitude. This is medically defined as anything over 8,000 feet (2,440 meters). Most people can travel to 8,000 feet with minimal effects. However, everyone reacts to altitude differently and altitude sickness can on set with some people irrespective of fitness and age. For details on how to best prepare and what to do in the unlikely event you are effected on your Adventure, please consult your physician.

## **What do I need to know to about safety and security on my trip?**

Many national governments provide a regularly updated advice service on safety issues involved with international travel. We recommend that you check your government's advice for their latest travel information before departure. We strongly recommend the use of a neck wallet or money belt while travelling, for the safe keeping of your passport, air tickets, travellers' cheques, cash and other valuable items. Leave your valuable jewellery at home - you won't need it while travelling. Many of the hotels we use have safety deposit boxes, which is the most secure way of storing your valuables. A lock is recommended for securing your luggage. During your trip you will have some free time to pursue your own interests, relax and take it easy or explore at your leisure. Please use your own good judgment when selecting an activity in your free time, we offer no representations about the safety of the activity or the standard of the operators running them. Although the cities visited on tour are generally safe during the day, there can be risks to wandering throughout any major city at night. It is our recommendation to stay in small groups and to take taxis to and from restaurants, or during night time excursions.

**Protests and Demonstrations-** Protests and demonstrations, even those that are well intended, have the potential to turn violent with no warning. Counter protests can also turn violent. Action by security forces to disperse demonstrators and protesters may occur at any time. If you are in an area where demonstrators or protesters are gathering, avoid the temptation of staying for a good photo opportunity and leave the area immediately.

Water based activities have an element of danger and excitement built into them. We recommend only participating in water based activities when accompanied by a guide(s). We make every reasonable effort to ensure the fun and adventurous element of any water based activities (in countries with varying degrees of operating standards) have a balanced approach to safety.

Swimming, including snorkeling, is always at your own risk.

We take all prudent measures in relation to your safety. For ways to further enhance your personal safety while traveling, please visit:

[www.gadventures.com/travel-resources/safety/](http://www.gadventures.com/travel-resources/safety/)

## **What are the trip specific safety considerations?**

Care should be taken when wandering around on your own in central Lima, as some areas can be dangerous and pickpockets are daring. Make sure that you are aware of your things at all times and don't go out carrying expensive gear or jewelry.

## **What rules should I know before joining this trip?**

Illegal drugs will not be tolerated on any trips. Possessing or using drugs not only contravenes the laws of the land but also puts yourself and those around you at risk. Smoking marijuana and opium is a part of local culture in some parts of the world but is not acceptable for our travellers. Our philosophy of travel is one of respect towards everyone we encounter and in particular the local people who make the world the special place it is. The exploitation of prostitutes is completely contrary to this philosophy.

## Is travel insurance required for my trip?

Travel Insurance: Travel insurance is compulsory in order to participate on any of our trips. When selecting a travel insurance policy please bear in mind that all clients must have medical coverage and that we require a minimum coverage of USD 200,000 for repatriation and emergency rescue. We strongly recommend that the policy also covers personal liability, cancellation, curtailment and loss of luggage and personal effects. If you have credit card insurance we require proof of purchase of the trip (a receipt of credit card statement) with a credit card in your name. Contact your bank for details of their participating insurer, the level of coverage and emergency contact telephone number.

## What is Planeterra?

Planeterra International Foundation is a non-profit organization committed to turning travel into impact by helping local communities earn an income from tourism. Planeterra connects underserved local communities to the benefits of tourism by developing and supporting small community-owned businesses. These businesses support Indigenous people, empower women, grant youth access to employment opportunities, and protect the environment. Planeterra also works to ensure these businesses have a thriving customer base by integrating their projects into G Adventures' itineraries globally.

G Adventures is Planeterra's largest corporate donor, covering all operating costs, so 100% of your donation will bring opportunity to people in need.

G Adventures Dollar-a-day Program - Make Every Day Count - Turn your travel into impact with [Planeterra Foundation](#).

Did you know? Most communities around the world do not benefit from tourism. Give back to the places you visit on your travels by creating opportunities for local people to earn an income, and protect the environment.

Make every day count by donating \$1/day for the length of your trip, and join us in empowering the communities you will visit when you travel. 100% of your donation goes directly to Planeterra projects.

## How can I share feedback about my trip experience?

After your travels, we want to hear from you! Your feedback information is so important to us that we'll give you 5% off the price of your next G Adventures trip if your feedback is completed on-line within 30 days of finishing your trip. Your tour evaluation will be e-mailed to you 24 hours after the conclusion of your trip. If you do not receive the tour evaluation link in the days after your tour has finished, please drop us a line at [customersolutions@gadventures.com](mailto:customersolutions@gadventures.com) and we will send it on to you.

## Does G Adventures have an email newsletter I can subscribe to?

Our adventure travel e-newsletter is full of travel news, trip information, interesting stories and contests. To avoid missing out on special offers and updates from G Adventures, subscribe at [www.gadventures.com/newsletters/](http://www.gadventures.com/newsletters/)

Stay current on how our company invests in our global community through our foundation – Planeterra. Sign up for [Planeterra's monthly news](#) to learn more about how to give back and support the people and places we love to visit.

## How old must I be to join this trip?

Minimum age of 2 years for this trip.

## Are international flights included in this trip?

No, international flights are generally not included in the price of your tour.

However, on some combo tours travelling between two different countries, international flights are included as part of the itinerary and price of the tour. Please speak to your GCO or booking agent for further details.

In addition, check-in times and baggage allowances/restrictions vary by airline and can change at any time. For the most up-to-date information for your flight, please contact your airline. We recommend checking in online in advance to avoid potential delays at the airport.

## What should LGBTQ+ travellers know about safety and travel considerations on this trip?

The safety and well-being of all of our travelers is a priority at G Adventures and that includes our travelers who identify as part of the LGBTQ+ community. We recognize that there are specific concerns and questions you may have about your adventure in terms of safety and security. We encourage you to visit our [LGBTQ+ page](#) for useful resources to ensure you feel safe and comfortable throughout the duration of your trip. The Equaldex tool linked on this page can be of particular help when deciding where you may want to visit next.

## Dossier Disclaimer

The information in this trip details document has been compiled with care and is provided in good faith. However it is subject to change, and does not form part of the contract between the client and the operator. The itinerary featured is correct at time of printing. It may differ slightly to the one in the brochure. Occasionally our itineraries change as we make improvements that stem from past travellers, comments and our own research. Sometimes it can be a small change like adding an extra meal along the itinerary. Sometimes the change may result in us altering the tour for the coming year. Ultimately, our goal is to provide you with the most rewarding experience. Please note that our brochure is usually released in November each year. If you have booked from the previous brochure you may find there have been some changes to the itinerary.

**VERY IMPORTANT:** Please ensure that you print a final copy of your Trip Details to review a couple of days prior to travel, in case there have been changes that affect your plans.

## Itinerary Disclaimer

While it is our intention to adhere to the route described below, there is a certain amount of flexibility built into the itinerary and on occasion it may be necessary, or desirable to make alterations. The itinerary is brief, as we never know exactly where our journey will take us. Due to our style of travel and the regions we visit, travel can be unpredictable. The Trip Details document is a general guide to the tour and region and any mention of specific destinations or wildlife is by no means a guarantee that they will be visited or encountered. Aboard expedition trips visits to research stations depend on final permission.

Additionally, any travel times listed are approximations only and subject to vary due to local circumstances.