

!
x

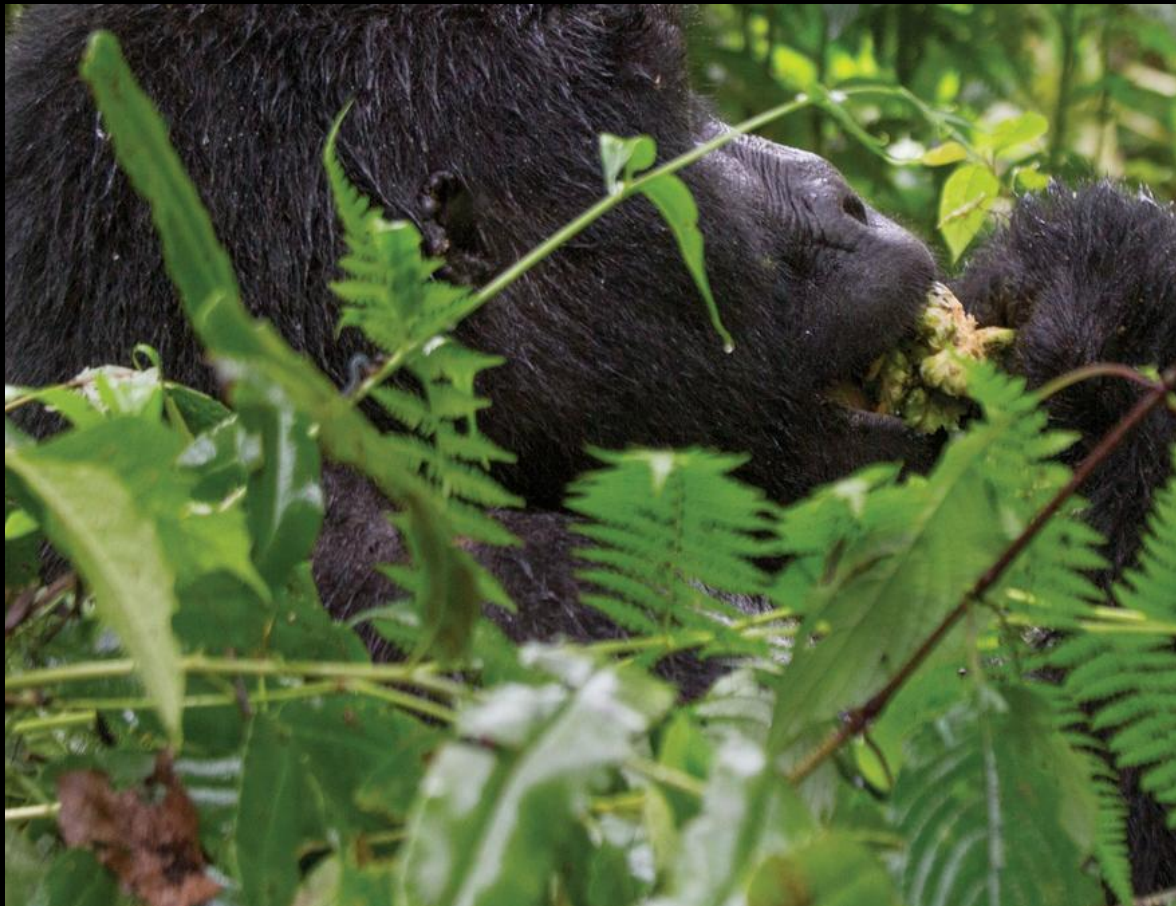
Sorry! There are no remaining departures for "Rwanda & Uganda Gorilla Discovery" (DRGNG), [but here are some similar trips.](#)

!
x

For more departures in 2021/22 please see the new itinerary of this tour, [click here.](#)



Last Updated: November 9, 2021



RWANDA & UGANDA GORILLA DISCOVERY

9 days, Kigali to Entebbe

Trip code DRGNG

WHAT'S INCLUDED

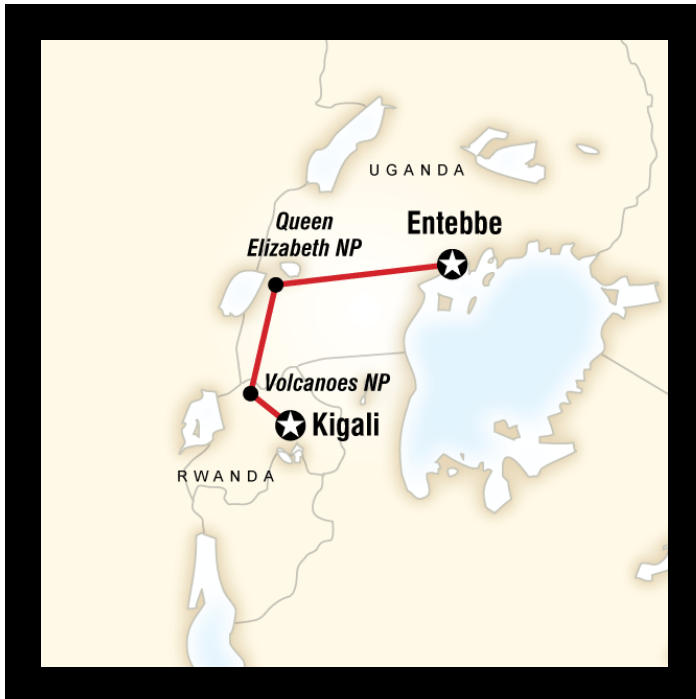
- Your Journeys Highlight Moment: Nyamirambo Women's Centre, Community Walk and Local Lunch, Kigali
- Your Journeys Highlight Moment: Mountain Gorilla Conservation Experience, Volcanoes National Park
- Your Journeys Highlight Moment: Mountain Gorilla Conservation Sundowner Experience, Volcanoes National Park
- Your Welcome Moment: Meet Your CEO and Group
- Arrival transfer
- All national park entrance fees
- Genocide memorial entrance
- Guided mountain gorilla trek with permits
- Golden monkey trek with permits
- Guided chimpanzee trek with permits
- Local village walk
- Safari drives in Queen Elizabeth National Park
- Wildlife boat cruise in Kazinga Channel
- Visit to the Equator
- Drum workshop
- All transport between destinations and to/from included activities

The information in this trip details document has been compiled with care and is provided in good faith. However it is subject to change, and does not form part of the contract between the client and G Adventures. The itinerary featured is correct at time of printing. It may differ slightly to the one in the brochure. Occasionally our itineraries change as we make improvements that stem from past travellers, comments and our own research. Sometimes it can be a small change like adding an extra meal along the itinerary. Sometimes the change may result in us altering the tour for the coming year. Ultimately, our goal is to provide you with the most rewarding experience. Please note that our brochure is usually released in November each year. If you have booked from the previous brochure you may find there have been some changes to the itinerary.

VERY IMPORTANT: Please ensure that you print a final copy of your Trip Details to review a couple of days prior to travel, in case there have been changes that affect your plans.

VALIDITY: Valid for all trips departing September 12th, 2016 - December 31st, 2016

ITINERARY



NOTE: Accommodations vary per departure and are subject to change until tour start date; they are not final and should be used as examples only. Travellers may login to the G Adventures App to view accommodations specific to their departure.

Day 1

KIGALI

Arrive at any time and transfer to the hotel.

If you arrive early, take some time to explore the city, known for its pleasant, friendly atmosphere. Kigali also has some interesting and historic sites outside of the city. If you want more time to explore, we recommend booking a pre-night.

Please remember that this is a developing area and as such, accommodations/service may not be of similar standard to which you are used to in your home country. There also can be differences in service levels between different countries in East Africa. As well, interruptions in electricity and water can be common and internet/wifi is often only available in large cities. We appreciate your patience and understanding as well as your sense of adventure.

A/C is not available in the accommodations used on this trip. In general is not a concern as it does cool down at night and depending on location fans or screened windows are available.

4x4 safari vehicles are used to better navigate rough roads but important to note that vehicles do not have A/C.



TODAY'S ACTIVITIES

Private Vehicle **Kigali International Airport – Kigali**

Settle in and scan the scenery from the convenience of a private vehicle.

ACTIVITY

Your opportunity to meet your CEO and fellow travellers, and learn more about your tour. Opt to join the group for a local meal afterwards. Don't forget to see the notice in the lobby (or ask reception) for the official time and place to meet up with the group.

Visit the Kigali Genocide Memorial and learn about the somber history of Rwanda. Later, embark on a community walk in the Nyamirambo township and enjoy a local lunch at the G Adventures-supported Nyamirambo Women's Centre. Travel to northern Rwanda in the afternoon to the lodge, located just outside the national park. The lodge provides stunning volcano views.

Volcanoes National Park borders Virunga National Park in the Democratic Republic of Congo (DRC) and Mgahinga Gorilla National Park in Uganda. Five of the eight volcanoes in the Virunga Mountains can be found here. The volcanoes and highlands of the park are covered in lush rainforest and bamboo (a favourite snack of the gorillas). While the most famous resident is the mountain gorilla, there's plenty of other wildlife roaming around: buffaloes, bushbucks, golden monkeys, hyenas, numerous bird species, and some elephants call this place home.

Altitude note: Volcanoes NP - approx 2,000 m (6,550 ft)



Meals included

Breakfast | Lunch | Dinner



TODAY'S ACTIVITIES

Kigali Genocide Memorial Visit Kigali 2h

Visit the Kigali Genocide Memorial Centre, which serves as a permanent memorial to those who fell victim to the genocide in 1994. The centre opened on the tenth anniversary of the Rwandan Genocide, in April 2004, and was built on a site where more than 250,000 people are buried.

Please note that content at the Memorial Centre shows the harsh reality of the genocide.

4x4 Kigali - Volcanoes National Park 3h 130km

Roads? Where this rough-and-ready vehicle's going, we don't need roads.

ACTIVITY

Today we visit a local women's centre supported by G Adventures. Located in Nyamirambo, the largest and most vibrant township in Rwanda, the centre provides women and girls from a diverse range of backgrounds, the opportunity to support each other and succeed, through education and training

programs. From here, we take a guided walk through the lively community, meeting some of the women who have benefitted from the centre's training programs, seeing their local businesses and initiatives and having a chance to share in their daily life. After the walk, enjoy lunch prepared by the women at the centre, allowing us to try local foods and popular dishes. After lunch, take some time to browse the centre's shop, which features handmade, high-quality crafts and clothes, made by some of the women. Proceeds from the meal, shop and walking tour help support the centre's education and training programs.

Day 3

VOLCANOES NATIONAL PARK

Enjoy a trek into the national park with a ranger/guide to view a unique and endangered species – the golden monkey. Watch these playful and lively creatures in their natural habitat. After, visit the Karisoke Research Center, which was founded by Dr. Dian Fossey in 1967. Meet with a resident researcher and enjoy a tour to learn about their ongoing work in the protection of mountain gorillas. In the evening, expand your understanding of gorillas through an in-depth lecture from one of the head wardens of Volcanoes National Park.

Proper hiking attire must be worn – you will be trekking in a rainforest with lots of vegetation, undergrowth, nettles and normally a rather muddy terrain.

Only 1 hour is spent with the Golden Monkeys to ensure their protection and conservation.

Please note that if you are unwell with anything contagious, even a common cold, you may be denied any of the treks to ensure the safety of the golden monkeys. This is a national park regulation, and trekking permits will not be refunded if you are denied entrance due to illness.

The order of activities over Days 3 and 4 can change depending on permit scheduling.



Meals included

Breakfast | Lunch | Dinner



TODAY'S ACTIVITIES

4x4

Volcanoes National Park

Roads? Where this rough-and-ready vehicle's going, we don't need roads.

Golden Monkey Trek

Volcanoes National Park

3h-5h

Embark on a trek in Volcanoes National Park to view a species even more endangered than the mountain gorilla – the golden monkey. It is only in Rwanda where this interesting species has been successfully habituated. Look (and listen) for these lively and curious creatures that like to chatter – they are often only seen high up in the trees, but, with luck, hikers may have a close encounter. Golden monkeys mainly live in the lower parts of the bamboo forests; they are not as socially “tight” as gorillas

and chimpanzees, and the number in the habituated troupe can vary on any given day between 20 and 80.

ACTIVITY

Founded 50 years ago by Dian Fossey, the Karisoke Research Center in Rwanda is considered the world's best hope for the survival of endangered mountain gorillas. Meet one of the resident researchers at the centre for a tour of the facility and to learn about their work in the protection and conservation of mountain gorillas in Volcanoes National Park. Thanks to the work Karisoke does, the mountain gorillas of this region are the only species of great ape to have increased in number in recent decades. Between 1967 and 1983, Dian Fossey received over 16 grants from National Geographic and was featured many times in the pages of National Geographic magazine.

ACTIVITY

Deepen your understanding of the world of gorillas through an in-depth lecture. Listen as one of the head wardens of Volcanoes National Park discusses topics including the history and behaviour of gorillas, threats to the animals, conservation activities, as well as the potential benefits of tourism.

Depart early and transfer to the national park to meet the park ranger/guide for orientation. Embark on a gorilla trek, which can vary in length and difficulty, depending on the location of the gorilla family that's being visited. Spend an hour observing these beautiful and endangered creatures. After, return to the lodge for lunch then visit a local village to catch a glimpse of daily rural life.

Approximately 800 mountain gorillas exist globally in the wild today. They are found in Rwanda, DRC, and Uganda. In DRC and Rwanda, gorillas live in similar ecosystems/areas. The gorilla species found in these three areas are called highland gorillas.

In Rwanda there are ten habituated gorilla families that are open to visits – the visit to a gorilla family is done once per day, with a maximum 8 trekkers per group and the duration of a visit is limited to one (1) hour with the gorilla family. The time spent with them is limited due to conservation considerations and to minimize impact on the day-to-day life of the gorilla family you are visiting. It is important to be well prepared for the trek – you never know if your total trek will be short or long. The total duration of a trek can vary and be anything between 4 and 9 hrs in length depending on the location of the gorillas, which are constantly moving. You will mainly walk where there are no paths apart from the occasional buffalo or elephant trail.

Touching the gorillas is not allowed (although in some cases they may touch you). Making loud noises or sudden movements is also not allowed. You should attempt to keep a distance of 7m from the gorillas, however the gorillas themselves are unaware of this and will often get very close, in which case you should try to slowly move away. At all times you must abide by the instructions of the trackers and rangers.

Please note that porters are available at approx. \$10USD per person. The porters are all hired from local villages and not only can carry your day pack, but assist you with a welcome hand over difficult spots. Regardless of your fitness level, we highly recommend hiring a porter as some tracks can be very muddy and elevation can affect even the most fit person. It also provides employment and supports the local community.

Mountain gorillas share 98% of our DNA and are prone to catching human illnesses. Please note that if you are unwell with anything contagious, even a common cold, you may be denied any of the treks to ensure the safety of the gorillas. This is a national park regulation, and trekking permits will not be refunded if you are denied entrance due to illness.

Proper hiking attire must be worn – you will be trekking in a rainforest with lots of vegetation, undergrowth, nettles and normally a rather muddy terrain. Minimum age for gorilla trekking is 15 years old.

Please note that depending on the size of our group and when permits are confirmed, we may be split into 2 trekking groups and you may be trekking with non-G travellers.



Meals included

Breakfast | Lunch | Dinner



TODAY'S ACTIVITIES

Gorilla Trekking

Volcanoes National Park - Kigali

4h-9h

Depart early and transfer to the national park to meet the park ranger/guide for orientation. Embark on the trek, which can vary in length and difficulty, depending on the location of the gorilla family that's being visited. Spend an hour observing these beautiful and endangered creatures. Trek back and return to the hotel with the remainder of the afternoon to yourself.

4x4

Volcanoes National Park

Roads? Where this rough-and-ready vehicle's going, we don't need roads.

Iby'iwacu Village Visit

Volcanoes National Park

Visit a small farming village where the locals have put a stop to poaching and put their focus on sheep farming. Meet the local people and get a first hand look at rural life in this area.

Day 5

VOLCANOES NATIONAL PARK/QUEEN ELIZABETH NATIONAL PARK

After breakfast, cross into Uganda, arriving at the Queen Elizabeth National Park area in the late afternoon.

Queen Elizabeth National Park is characterized by open savannah, large areas of swamp around Lake George, the extensive Maramagambo Forest in the southeast, and the forested Kyambura Gorge along the border with Kyambura Game Reserve.

There is little accommodation inside the national park that fits our upgraded service level. Most of the mid-range lodges are adjacent to the park but it can often take approx. an hour to reach the park gates due to poor road logistics and conditions. For this reason there is a lot of driving to get to/from activities within the national park area.



Meals included

Breakfast | Lunch | Dinner



TODAY'S ACTIVITIES

4x4

Volcanoes National Park - Queen Elizabeth National Park

8h-9h

Roads? Where this rough-and-ready vehicle's going, we don't need roads.

Border Crossing (Rwanda - Uganda)

Gatuna - Katuna

Ready for a little more ink in your passport? Grab your bags and get ready to check another country off your bucket list.

Day 6

QUEEN ELIZABETH NATIONAL PARK

Explore the national park with a ranger on a safari walk in search of chimps. Enjoy a safari drive with possible sightings of buffalo, elephants, giant forest hogs, hyenas, leopards, lions, and warthogs.

The order of activities over Days 6 and 7 can change depending on chimp permit scheduling.

Proper hiking attire must be worn - there are trails but we can at times go off trail, to search out chimps. Vegetation can be thick with undergrowth, nettles and often in muddy terrain.

At all times you must abide by the instructions of the trackers and rangers.

Please note that if you are unwell with anything contagious, even a common cold, you may be denied any of the treks to ensure the safety of the chimps. This is a national forest regulation, and trekking permits will not be refunded if you are denied entrance due to illness.



Meals included

Breakfast | Lunch | Dinner



TODAY'S ACTIVITIES

Chimpanzee Trek - Kyambura Gorge

Queen Elizabeth National Park

1h30m-3h

Embark on a chimp trek with a park ranger/guide in Kyambura Gorge (aka the "Valley of Apes") located in the eastern corner of Queen Elizabeth National Park. See more than just chimps in their natural environment. Learn about the unique ecosystem of the gorge's rainforest. Keep an eye out for other animals that can include birds, elephants, and hippos. Although chimp sightings are not guaranteed, visitors stand a good chance of hearing and seeing our distant cousins as they are habituated and not bothered by humans watching their daily behaviour.

Queen Elizabeth National Park Wildlife Safari Drive

Queen Elizabeth National Park

Enjoy a wildlife safari drive inside Queen Elizabeth National Park. The park is home to Uganda's largest wildlife populations. Keep an eye out for buffalo, elephants, hippos, hyenas, lions, warthogs, and the elusive leopards.

4x4

Queen Elizabeth National Park

Roads? Where this rough-and-ready vehicle's going, we don't need roads.

Day 7

QUEEN ELIZABETH NATIONAL PARK

Embark on a morning wildlife safari drive for more wildlife viewing inside the park. In the afternoon, take a boat cruise on the Kazinga Channel to view birds, hippos, and, with a bit of luck, elephants or big cats.



Meals included

Breakfast | Lunch | Dinner



TODAY'S ACTIVITIES

Queen Elizabeth National Park Wildlife Safari Drive

Queen Elizabeth National Park

Enjoy a wildlife safari drive inside Queen Elizabeth National Park. The park is home to Uganda's largest wildlife populations. Keep an eye out for buffalo, elephants, hippos, hyenas, lions, warthogs, and the elusive leopards.

Kazinga Channel Cruise

Queen Elizabeth National Park

3h

Take a boat cruise on the Kazinga Channel, a waterway inside Queen Elizabeth National Park that connects Lake George and Lake Edward. Look out for a variety of wildlife who are drawn to the channel shores. Spot birds, crocodiles, hippos, and reptiles.

4x4

Queen Elizabeth National Park

Roads? Where this rough-and-ready vehicle's going, we don't need roads.

Day 8

QUEEN ELIZABETH NATIONAL PARK/ENTEBBE

After breakfast, head to Entebbe with a stop at the Equator and a visit to a royal drum maker's workshop.



Meals included

Breakfast | Lunch



TODAY'S ACTIVITIES

4x4

Queen Elizabeth National Park - Entebbe

8h-9h

350km

Roads? Where this rough-and-ready vehicle's going, we don't need roads.

Equator Visit

Mpigi

30m

Enjoy a fun stop at the equator and watch a demonstration on how water swirls in opposite directions in the northern and southern hemispheres. Uganda is one of the few countries in the world where the imaginary line that divides the earth into two can be crossed.

Drum Makers Workshop

Mpigi

30m

Visit a traditional drum making workshop for a demonstration on how the drums are made using animal hides and woods. After the demo, it's time for a short musical presentation.

Depart at any time.

We recommend booking post nights if you want more time to explore Entebbe and the surrounding area.



Meals included

Breakfast



TODAY'S ACTIVITIES

Departure Day

Not ready to leave? Your CEO can help with travel arrangements to extend your adventure.

What's included

- Your Journeys Highlight Moment: Nyamirambo Women's Centre, Community Walk and Local Lunch, Kigali
- Your Journeys Highlight Moment: Mountain Gorilla Conservation Experience, Volcanoes National Park
- Your Journeys Highlight Moment: Mountain Gorilla Conservation Sundowner Experience, Volcanoes National Park
- Your Welcome Moment: Meet Your CEO and Group
- Arrival transfer
- All national park entrance fees
- Genocide memorial entrance
- Guided mountain gorilla trek with permits
- Golden monkey trek with permits
- Guided chimpanzee trek with permits
- Local village walk
- Safari drives in Queen Elizabeth National Park

- Wildlife boat cruise in Kazinga Channel
- Visit to the Equator
- Drum workshop
- All transport between destinations and to/from included activities

What are the main highlights of this trip?

Get up close and personal with mountain gorillas in their backyard, learn about gorillas during a lecture from one of the head wardens of Volcanoes National Park, enjoy a local lunch at the G Adventures-supported Nyamirambo Women's Centre, trek through the forest to visit Chimpanzees & Golden Monkeys.

What are the main highlights of this trip?

Get up close and personal with mountain gorillas in their backyard, learn about gorillas during a lecture from one of the head wardens of Volcanoes National Park, enjoy a local lunch at the G Adventures-supported Nyamirambo Women's Centre, trek through the forest to visit Chimpanzees & Golden Monkeys.

Is there a disclaimer I should read before booking this trip?

The information in this trip details document has been compiled with care and is provided in good faith. However it is subject to change, and does not form part of the contract between the client and the operator. The itinerary featured is correct at time of printing. It may differ slightly to the one in the brochure. Occasionally our itineraries change as we make improvements that stem from past travellers, comments and our own research. Sometimes it can be a small change like adding an extra meal along the itinerary. Sometimes the change may result in us altering the tour for the coming year. Ultimately, our goal is to provide you with the most rewarding experience. Please note that our brochure is usually released in November each year. If you have booked from the previous brochure you may find there have been some changes to the itinerary.

VERY IMPORTANT: Please ensure that you print a final copy of your Trip Details to review a couple of days prior to travel, in case there have been changes that affect your plans.

Is there a travel disclaimer for my itinerary I should review before booking this trip?

While it is our intention to adhere to the route described below, there is a certain amount of flexibility built into the itinerary and on occasion it may be necessary, or desirable to make alterations. The itinerary is brief, as we never know exactly where our journey will take us. Due to our style of travel and the regions we visit, travel can be unpredictable. The Trip Details document is a general guide to the tour and region and any mention of specific destinations or wildlife is by no means a guarantee that they will be visited or encountered. Aboard expedition trips visits to research stations depend on final permission.

Additionally, any travel times listed are approximations only and subject to vary due to local circumstances.

What important notes should I be aware of before the trip?

1. AGE RESTRICTIONS

Please note that all passengers must be aged 15 years or older (prior to start of travel) to go on this tour - there are no exceptions to this as it is for safety reasons and strictly controlled by the Government.

2. PHYSICAL REQUIREMENT

This trip is rated a level 4 physical requirement- travellers should be in excellent physical condition, without any heart problems and prepared to spend strenuous days in humid rain forests, steep terrain and high altitude trekking for chimpanzee and gorillas, as well as other primates. Please ensure you meet the requirements as described under "physical rating".

3. TRAVEL DAYS

Travelling can be difficult, as long drives and poor road conditions are the rule as opposed to the exception in both Rwanda and Uganda. Despite this, the diversity and scenery of the African landscape, the local culture and abundant wildlife are all well worth the experience.

4. WILDLIFE SIGHTINGS

G Adventures can never guarantee the sighting of wildlife, especially when it comes to mountain gorillas. However, the mountain gorilla trek is organized to ensure success. Before heading into the jungle, our local guides receive coordinates from trackers on the whereabouts of the gorillas, and the trackers stay with the gorillas until the group arrives.

5. ILLNESS

Please note that if you are unwell with anything contagious, even a common cold, you may be denied any of the treks to ensure the safety of the gorillas, golden monkeys and chimps. This is a national park regulation, and trekking permits will not be refunded if you are denied entrance due to illness.

6. CAMERAS

As it is very dark and damp in the jungle; please ensure your camera equipment is appropriate for such conditions and that you bring dry bags to protect it.

7. ELECTRICITY

The power supply in Uganda and Rwanda is nominally 240VAC, 50hz. Variable voltage, spikes and sporadic, unexpected, unscheduled power cuts of varying duration can be expected.

8. YELLOW FEVER

Please be advised that it will be required to show a yellow fever certificate upon entering Uganda and Rwanda.

9. AIRPORT & BORDER HEALTH SCREENINGS

Due to the outbreak of Ebola Virus Disease (EVD) in the Democratic Republic of the Congo (DRC), Rwandan and Ugandan authorities have implemented health screening measures at entry points, including airports and border crossings. Authorities may conduct health screenings of any incoming travelers, including routine medical questioning and temperature readings. Currently, there are no reported cases of Ebola in Uganda or Rwanda, but we want you to be aware of the precautionary measures that are being taken. We recognize that new security measures may be implemented daily throughout the region, so we wish to prepare you with the most current information.

According to the Centers for Disease Control and Prevention (CDC), the Ebola virus is transmitted only through contact with the bodily fluids of an infected individual, as it is not an airborne illness. Per CDC recommendations, we advise our travelers to follow these general hygienic guidelines to help prevent illness while traveling:

- Wash hands with soap and water or an alcohol-based hand sanitizer.
- Avoid contact with the bodily fluids of others.
- For more information about the Ebola virus, please consult the CDC's webpage dedicated to information about Ebola: <http://www.cdc.gov/vhf/ebola/>

10. COMBO TRIP

Please note that this tour combines with other G Adventures tours. As such, the staff and some travel companions on your tour may have previously been traveling together with G Adventures, prior to Day 1 of your tour. Likewise, some staff and travel companions may be continuing together on another G Adventures tour, after your trip concludes.

What is the group leader like?

The Chief Experience Officer (CEO) will be the group manager and leader. He/she organizes the trip, and will be there to assist you when needed. He/she will take care of the small things so you can concentrate on enjoying your adventure. All of our CEOs in East Africa are experienced group leaders, with a broad knowledge base of the region's history, cultures, and wildlife. Your leader will be from either southern or East Africa depending on which part of the tour you are on. In Rwanda/Uganda the CEO will also drive.

During both treks in Volcanoes National Park, we use an experienced and certified tracking guide, and armed guards to accompany you for your safety.

We also use local guides for some included activities where we think more specific knowledge will add to the enjoyment of the places we are visiting.

How large will the group be?

Max 7, avg 6.

What meals are included in this trip?

8 breakfasts, 7 lunches, 6 dinners

What are the meals like on this trip?

Most of the meals on this tour are included in the tour price.

Vegetarian meals and other dietary requirements need to be specified prior to arrival. Please note all bottled drinking water will be at your own expense.

What are the modes of transportation on my trip?

4x4 safari vehicle, walking, hiking, boat.

What transportation will we take on this trip?

Road travel can be difficult, with long drives and poor road conditions at times. Please take note of the travel times and distances in the above itinerary, and consider that this is often on poor quality, bumpy roads. Despite this, most clients feel that the diversity of the African landscape, culture and wildlife are all well worth the experience. As such, this trip will be operated in 4x4 Land Cruiser/safari vehicle, driven by our CEO. The 4x4s have large windows which slide open for wildlife viewing and photography.

Is there an extra cost for travelling solo?

We believe single travellers should not have to pay more to travel so our group trips are designed for shared accommodation and do not involve a single supplement. Single travellers joining group trips are paired in twin or multi-share accommodation with someone of the same sex for the duration of the trip. Some of our Independent trips are designed differently and single travellers on these itineraries must pay the single trip price.

Where will we stay during the trip?

Hotel/lodges (8 nts).

Will I get my own room?

Please note if you have booked the My Own Room/Tent option for this tour, you will receive your own single accommodation for all night stops.

What kind of accommodation can I expect on this trip?

Start and end hotels on this tour offer comfortable accommodations with en-suite bathrooms, standard facilities, and wifi. Additional amenities vary from location to location. Please see the hotel listings on the Full Itinerary if you would like to learn more about the offerings of your accommodations.

The tented camp accommodations on this tour are situated centrally, with easy access to the park for wildlife safari drives. Tents are typically spacious with mosquito-proof netting, comfortable bedding, and en-suite bathroom with flushing toilets and camping showers.

Please remember that hotel/lodge/camp standards can be different from what you are used to in your home country, which is part of the appeal of adventure travel.

Note:

- 1) Under certain circumstances we reserve the right to change accommodation and provide something slightly different to what is described, though it will always be of similar or better standard/level.
- 2) Most lodges and camps do not have 24hr electricity - they usually run on generators which are routinely shut off overnight from approximately 10pm to 5am.
- 3) Lodges and camps are NOT equipped with fans or air conditioning due to the electricity constraints listed above.
- 4) Winter nights (June to September) can be cold, and most lodges and hotels do not have insulation or central heating. If you require additional blankets or a hot water bottle, these can be requested through your CEO or at the reception.

What is the joining hotel?

For details of your joining hotel please refer to your tour voucher, G Account, the G Adventures App or contact your travel agent.

What are the joining instructions?

An arrival transfer is included when you arrive on Day 1, or if you arrive up to three days prior provided that you have booked your pre-accommodation through National Geographic Journeys in our joining hotel. Due to customer experience and quality considerations, all services related to the tour must be continuous.

Our driver will be waiting for you with a National Geographic Journeys sign with your name on it, and they will be waiting for you outside the luggage hall. There most likely will be many signs, so please check carefully for your name. In the unlikely case, you are unable to find the guide after 30 minutes, please call our local representative in Rwanda:

Name: Robert

Contact: +250 784 744 586 or +250 789 080 348

Please note that day 1 is an arrival day and no activities have been planned on this day. Upon arrival to the city on day 1, please make your way to the joining hotel via your included transfer. Details on where to meet your transfer can be found in your voucher notes or on the G Adventures app.

If you have booked pre-tour accommodations through G Adventures, please note that you must contact us to confirm the included arrival transfer. Check-in time at your start hotel will be in the afternoon.

Once you arrive at the hotel, look for a note or bulletin board in the reception with a note from your CEO. This note will give the details of your Welcome Meeting on day 1.

Your CEO will contact you at the hotel on Day 1 and make sure you are settled comfortably. If you arrive late, they will leave you a message detailing what time and where you should meet the next morning. Your CEO will organize a short meeting soon after arrival, during which you will meet other tour participants and receive information about general and specific aspects of the trip.

What happens if I experience problems when arriving?

We don't expect any problems, and nor should you, but if for any reason you are unable to commence your trip as scheduled, as soon as possible please contact your starting point hotel, requesting that you speak to or leave a message for your CEO (if you are not on a group tour please refer to the emergency contact details provided in this dossier). If you are unable to get in touch with your leader, please refer to our emergency contact details. If you have pre-booked an airport transfer and have not made contact with our representative within 30 minutes of clearing customs and immigration, we recommend that you make your own way to the Starting Point hotel, following the Joining Instructions. Please apply to your travel agent on your return for a refund of the transfer cost if this occurs.

Who should I contact in case of an emergency?

Should you need to contact us during a situation of dire need, it is best to first call either the G Adventures Local Representative (if one is listed below) or our G Adventures Local Office. If for any reason you do not receive an immediate answer, please leave a detailed message and contact information, so they may return your call and assist you as soon as possible.

AIRPORT TRANSFER: If you have purchased an arrival through G Adventures or if an arrival transfer is included in the cost of your tour, please note that: Your arrival transfer has been arranged based on flight information provided to us. If you are advised of a flight schedule change within 48 hours of your scheduled arrival time, we will do our best to rearrange your arrival transfer however we cannot guarantee this. If your arrival transfer does not arrive within 30 minutes after you have exited the arrivals area please take a taxi to your start point hotel.

EMERGENCY CONTACT NUMBERS

G Adventures Local Office (Nairobi, Kenya)
+254 727 208 832

G Adventures Local Representative (Rwanda)
Robert: +250 784 744 586 or +250 789 080 348

If you are unable for any reason to contact our local operator or local office, please call the numbers listed below, which will connect you directly with our 24 hour Sales team, who will happily assist you.

Toll-free, North America only: 1 888 800 4100

Calls from UK: 0344 272 0000

Calls from Germany: 0800 365 1000

Calls from Australia: 1 300 796 618

Calls from New Zealand: 0800 333 307

Outside North America, Australia, New Zealand, Germany and the UK: +1 416 260 0999

Are there any additional packing suggestions I should consider?

You will be on the move a lot, so our advice is to pack as lightly as possible. Your baggage should be clearly labelled and restricted to one soft compact suitcase, sports bag, or backpack, of medium size, as well as a day pack.

On this trip you may experience several types of weather. It is important to pack clothes for warm days and cool evenings. Light, quick-drying, practical clothes are advisable for this trip.

While hiking, your clothes will in all likelihood get very muddy and may not recover to their original state - therefore take old clothing for trekking. Hard wearing clothes, no bright colours, or no army camouflage clothing should be worn.

Greens, khaki and similar neutral clothes are recommended.

What should be on my packing list?

Documents:

- Flight info (required) (Printouts of e-tickets may be required at the border)
- Insurance info (required) (With photocopies)
- Passport (required) (With photocopies)
- Vouchers and pre-departure information (required)
- Visas or vaccination certificates (With photocopies)

Essentials:

- Toiletries (required) (Shampoo, bodywash, soap, etc.)
- Binoculars (optional)
- Camera (With extra memory cards and batteries)
- Cash, credit and debit cards
- Day pack (Used for daily excursions or short overnights)
- Ear plugs
- First-aid kit (should contain lip balm with sunscreen, sunscreen, whistle, Aspirin, Ibuprofen, bandaids/plasters, tape, anti-histamines, antibacterial gel/wipes, antiseptic cream, Imodium or similar tablets for mild cases of diarrhea, rehydration powder, water purification tablets or drops, insect repellent, sewing kit, extra prescription drugs you may be taking)
- Flashlight/torch (Headlamps are ideal)
- Fleece top/sweater
- Footwear
- Hat
- Headphones (Noise-cancelling recommended)
- Locks for bags
- Long pants/jeans
- Moneybelt
- Outlet adapter
- Personal entertainment (Reading and writing materials, cards, music player, etc.)
- Reusable water bottle
- Shirts/t-shirts
- Sleepwear
- Small travel towel
- Sunglasses
- Swimwear
- Watch and alarm clock
- Waterproof backpack cover
- Windproof rain jacket

Gorillas:

- Gardening gloves (Highly recommended for gorilla trekking)
- Neutral coloured clothing (Your clothes will likely get very muddy - therefore take old clothing for the gorilla trekking. No bright colours should be worn. Greens, khaki and similar neutral clothes are recommended)

Hiking/Trekking:

- Gloves
- Hat
- Hiking boots/sturdy walking shoes
- Hiking pants (Convertible/Zip-off and quick dry recommended)
- Snacks (Protein bars, chocolate, dried fruits, candies, energy sweets)
- Socks (Trekking socks – woollen or synthetic, not cotton)
- Thermal base layer (Woollen or synthetic, not cotton)
- Walking poles (Highly recommended)

Smart Dress:

- Smart outfit (For evenings out)

Warm Weather:

- Sandals/flip-flops
- Shorts/skirts (Longer shorts/skirts are recommended)
- Sturdy water shoes/sandals
- Sun hat/bandana
- Swimwear Note: The climate in East Africa varies between the dry and rainy season. Please ensure you bring a windproof rain jacket if you are travelling between April & May, October & November.

When can I do my laundry on this trip?

Laundry facilities are offered by some of our hotels and lodges for a charge.

What are the visas and entry requirements for my trip?

All countries require a valid passport (with a minimum 6 months validity). Contact your local embassy or consulate for the most up-to-date visa requirements, or see your travel agent. It is your own responsibility to have the correct travel documentation. Visa requirements for your trip will vary depending on where you are from and where you are going. We keep the following information up to date as far as possible, but rules do change and sometimes without warning. While we provide the following information in good faith, it is vital that you check the information yourself and understand that you are fully responsible for your own visa requirements.

Visa information specific to your destination and nationality can be found in our Important Pre-Departure Information page [here](#)

East Africa Tourist Visa

An East Africa Tourist Visa allows the holder to move freely between Kenya, Rwanda and Uganda with only one Visa, and is valid for a period of 90 days. It also acts as a multiple entry Visa, so if you leave any of the above countries, you do not need a new Visa to re-enter (provided it is within the 90 day validity period). These need to be applied for in advance, and a confirmation letter received from the Rwanda immigration department if the first point of entry is Kigali, Rwanda. You should contact the foreign Embassy (of the country you will be entering through) for more details. The cost is 100USD per person.

<https://irembo.gov.rw/rolportal/en/web/dgie/east-africa-tourist-visa>

RWANDA

Please check the Rwanda immigration department's official website - www.migration.gov.rw - which nationalities need a visa and which ones do not prior to travel - it is VERY important to do this as travellers without the correct documentation with them will NOT be allowed to board their Rwanda bound flight. The visa facilitation is also applied for on this website and you normally get a confirmation in 3-5 working days. Please make sure you apply for this at least a month before your intended arrival to Rwanda. Bring a copy of the visa approval sent to you (VERY important) and pay for the visa at point of entry. Current cost for a 15 day tourist visa is US\$ 50 per person (June 2015) - payable in US\$ cash only. Please be aware that the US\$ notes has to be from 2006 or newer, older notes are NOT accepted for payments in Rwanda.

** Please be advised that a valid yellow fever vaccination card is mandatory for entry into Rwanda.

UGANDA

Visas for Uganda for most nationalities must be obtained through an Electronic Visa application online in advance, and a payment of \$50 USD cash will have to be made upon arrival to the border.

LIST OF COUNTRIES WHOSE NATIONALS DO NOT REQUIRE TO PAY FOR A VISA TO ENTER UGANDA:

Angola, Antigua, Bahamas, Barbados, Belize, Burundi, Comoros, Cyprus, Eritrea, Fiji, Gambia, Grenada, Italy (Diplomatic Passport holders only), Jamaica, Kenya, Lesotho, Malawi, Mauritius, Madagascar, Rwanda, Seychelles, Sierra Leone, Singapore, Solomon Islands, St. Vincent and Grenadines, Swaziland, Tanzania, Vanuatu, Zambia and Zimbabwe.

Nationals of these countries are issued gratis (free of charge) visas upon their arrival.

** Please be advised that a valid yellow fever vaccination card is mandatory for entry into Uganda.

This information is accurate at the time of writing, and please contact your local embassy or consulate for the most up-to-date visa requirements and costs, regarding these, and the other countries visited, or see your travel agent. It is your responsibility to have the correct travel documentation.

What should I consider when planning my personal expenses and discretionary spending for this itinerary?

Every traveller is different and therefore spending money requirements will vary. Some travellers may drink more than others while other travellers like to purchase more souvenirs than most. Please consider your own spending habits when it comes to allowing for drinks, shopping and tipping. Please also remember the following specific recommendations when planning your trip.

What should I know about currency, credit cards, and exchanging money while on this tour?

The local currency in Rwanda is the Rwanda Franc. In Uganda it is the Ugandan Shilling.

There are several foreign exchange bureaus in Kigali offering similar rates, the most widely accepted currency is US\$. Your CEO will inform you where you can change money throughout the tour and approximately how much money you will need for each country. That said - most everything is included in this tour - we recommend that you bring enough USD cash with you, to cover for any additional drinks/snacks and souvenir shopping.

The easiest foreign currency to exchange for locally for any of the local currencies is the \$US; however the British Pound and Euro may also be exchanged as well. Please note that due to past problems with forgery, \$US notes that are older than year 2006 are not accepted in Africa. Larger note (\$US 50, \$US 100 etc) can be difficult to change in some places, but will gain you the best exchange rate.

If you plan to buy your visas at borders, you will need to bring \$USD cash to pay for these visas. Please note you cannot use the local currency or any other currency to buy these visas- they must be purchased in USD.

Please do not bring Travellers' cheques to Africa. They are difficult if not impossible to exchange in many places.

Visa/Plus system cards are the most widely accepted debit cards. it is harder to find machines Mastercard/Cirrus cards. We highly recommend that if you hold a Mastercard, you obtain a Visa card prior to departure and travel with both. This is also useful should something unforeseen happen to one of your cards during your travels. While there are many ATMs in the major centres, there are no guarantees that your credit or debit cards will actually work in Africa. Check with your bank.

Credit cards can be used in major cities and towns ONLY but please do not rely on them as a method of payment because they are generally not widely accepted. You should be aware that to purchase products or services on a credit card a fee of 5%-10% usually applies. The majority of our optional activities can also be paid by credit card. Your CEO will advise on these.

Please note that in many areas there may be occasional power-outages, where there will be no electricity for hours at a time. In addition, ATMs outside of larger centers often run out of cash or can be out of order unexpectedly. These factors could affect your ability to access money from ATMs. As such, please do not rely on credit or debit cards as your only source of money.

A combination of foreign currency and debit/credit cards for cash advances is best. Always take more rather than less, as you don't want to spoil the trip by constantly feeling short of funds.

As currency exchange rates can fluctuate often we ask that you refer to the following website for daily exchange rates: www.xe.com.

How much emergency money should I bring on this trip?

Please also make sure you have access to at least an additional USD \$200 (or equivalent) as an 'emergency' fund, to be used when circumstances outside our control (ex. a natural disaster) require a change to our planned route. This is a rare occurrence!

Do I need to pay a departure tax?

USD40, usually included in most international air tickets.

Should I be tipping on my trip?

Tipping is an expected, though not compulsory, component of your tour program. The gesture serves as an expression of appreciation for exceptional service, and amounts given are up to your discretion.

Tipping is one of the most direct ways that you can have a positive economic impact within the African community. Although it may not be customary for you, it is an important source of income for those in the tourism industry. Giving a tip should be seen as a formal 'thank you', and the action should in no way be awkward.

The best method of tipping someone that has served the whole group is to plan in advance, and not rush when it comes to saying goodbye. A suggestion would be for each group member to contribute anonymously by putting their tip into an envelope. This often works the best and the group should gather to present the gift to the recipient(s), offering their thanks and showing their appreciation. This method brings the action out into the open, allowing for a friendly and appreciative interaction between the group and the recipient(s).

You may use the following as a guideline, all given in a per person format:

Driver/Guide: \$5-10 USD (per day)

Gorilla Trekking Guides: \$10-15 USD (per day)

Gorilla Trekking Porters: \$20 USD (per day)

Restaurant/café servers: 10% of the cost of the bill

What activities are optional on this trip?

- No optional activities

Are there any health considerations I should know before travelling?

We recommend you contact your family physician, or your local travel clinic for the most up-to-date health information at least one month before departure. Travellers should also carry a basic first-aid kit and hand sanitizers/antibacterial wipes on their travels. Medical facilities are basic throughout these countries. For your own safety, we strongly recommend that you advise your tour leader of any medical condition that may affect you while travelling with the group. Your tour leader will be able to inform you of local health advisories (e.g. drinking water quality). Please ensure you have all the inoculations recommended by your doctor.

Yellow Fever Certificate Note: (Updated: May 2017)

It is compulsory to show a valid Yellow Fever Certificate if you are travelling to the following G Adventures-visited countries from a Yellow Fever endemic country:

- Botswana
- Ethiopia
- Kenya
- Madagascar
- Malawi
- Mozambique
- Namibia
- Rwanda
- South Africa
- Swaziland
- Uganda
- Zambia
- Zimbabwe

For some of these countries, proof of Yellow Fever vaccination is also required for passengers who have travelled more than 12 hours through the airport of an endemic country. If other countries not endemic to Yellow Fever have been visited after visiting an endemic country, then a Yellow Fever certificate may still be required on entry. Please check country-specific regulations before your departure.

Malaria

Malaria is a mosquito-borne disease that is present in some regions in Africa. Risk of malaria can increase during periods of heavy rain, during the rainy seasons, and in densely populated areas of Southern & East Africa. To prevent malaria, we recommend speaking to your doctor about taking preventative medication (prophylaxis), combined with regular use of insect repellent spray/cream. Please check updated travel health advisories specific to malaria before your departure.

What do I need to know to about safety and security on my trip?

Many national governments provide a regularly updated advice service on safety issues involved with international travel. We recommend that you check your government's advice for their latest travel information before departure. We strongly recommend the use of a neck wallet or money belt while travelling, for the safe keeping of your passport, air tickets, travellers' cheques, cash and other valuable items. Leave your valuable jewellery at home - you won't need it while travelling. Many of the hotels we use have safety deposit boxes, which is the most secure way of storing your valuables. A lock is recommended for securing your luggage. When travelling on a group trip, please note that your CEO has the authority to amend or cancel any part of the trip itinerary if it is deemed necessary due to safety concerns. Your CEO will accompany you on all included activities. During your trip you will have some free time to pursue your own interests, relax and take it easy or explore at your leisure. While your CEO will assist you with options available in a given location please note that any optional activities you undertake are not part of your itinerary, and we offer no representations about the safety of the activity or the standard of the operators running them. Please use your own good judgment when selecting an activity in your free time. Although the cities visited on tour are generally safe during the day, there can be risks to wandering throughout any major city at night. It is our recommendation to stay in small groups and to take taxis to and from restaurants, or during night time excursions.

Protests and Demonstrations- Protests and demonstrations, even those that are well intended, have the potential to turn violent with no warning. Counter protests can also turn violent. Action by security forces to disperse demonstrators and protesters may occur at any time. If you are in an area where demonstrators or protesters are gathering, avoid the temptation of staying for a good photo opportunity and leave the area immediately.

Water based activities have an element of danger and excitement built into them. We recommend only participating in water based activities when accompanied by a guide(s). We make every reasonable effort to ensure the fun and adventurous element of any water based activities (in countries with varying degrees of operating standards) have a balanced approach to safety. It is our policy not to allow our CEOs to make arrangements on your behalf for water based activities that are not accompanied by guide(s).

Swimming, including snorkeling, is always at your own risk.

We take all prudent measures in relation to your safety. For ways to further enhance your personal safety while traveling, please visit:

www.gadventures.com/travel-resources/safety/

What are the trip specific safety considerations?

Cities

Please exercise caution in the cities and always take a pre-arranged taxi if you go out at night.

Trekking/safari

At all times, please abide by all National park/reserve rules and always follow interactions from guides/trackers specifically, these are set to not just protect the wildlife but also to protect you.

Photography

Please refrain from taking photos of police stations, airports, bus stations, immigration and border crossings, army barracks and personnel, or any government building. It is against the law and will result in the minimum of your film and camera being confiscated.

What rules should I know before joining this trip?

Illegal drugs will not be tolerated on any trips. Possessing or using drugs not only contravenes the laws of the land but also puts the rest of the group at risk. Smoking marijuana and opium is a part of local culture in some parts of the world but is not acceptable for our travellers. Our philosophy of travel is one of respect towards everyone we encounter, and in particular the local people who make the world the special place it is. The exploitation of prostitutes is completely contrary to this philosophy. Our CEOs have the right to expel any member of the group if drugs are found in their possession or if they use prostitutes.

Is travel insurance required for my trip?

Travel Insurance: Travel insurance is compulsory in order to participate on any of our trips. When travelling on a group trip, you will not be permitted to join the group until evidence of travel insurance has been sighted by your CEO, who will take note of your insurance details. When selecting a travel insurance policy please bear in mind that all clients must have medical coverage and that we require a minimum coverage of USD 200,000 for repatriation and emergency rescue. We strongly recommend that the policy also covers personal liability, cancellation, curtailment and loss of luggage and personal effects. If you have credit card insurance we require proof of purchase of the trip (a receipt of credit card statement) with a credit card in your name. Contact your bank for details of their participating insurer, the level of coverage and emergency contact telephone number.

What is Planeterra?

Planeterra International Foundation is a non-profit organization committed to turning travel into impact by helping local communities earn an income from tourism. Planeterra connects underserved local communities to the benefits of tourism by developing and supporting small community-owned businesses. These businesses support Indigenous people, empower women, grant youth access to employment opportunities, and protect the environment. Planeterra also works to ensure these businesses have a thriving customer base by integrating their projects into G Adventures' itineraries globally.

G Adventures is Planeterra's largest corporate donor, covering all operating costs, so 100% of your donation will bring opportunity to people in need.

G Adventures Dollar-a-day Program - Make Every Day Count - Turn your travel into impact with [Planeterra Foundation](#).

Did you know? Most communities around the world do not benefit from tourism. Give back to the places you visit on your travels by creating opportunities for local people to earn an income, and protect the environment.

Make every day count by donating \$1/day for the length of your trip, and join us in empowering the communities you will visit when you travel. 100% of your donation goes directly to Planeterra projects.

How can I share feedback about my trip experience?

Earn 5% off your next G Adventures Tour (up to \$100 USD)*

After your travels, we want to hear from you! Your feedback information is so important to us and to thank you for your time, we are pleased to offer a 5% discount (up to a maximum of \$100 USD) off your next G Adventures holiday. All you need to do is submit the form within 4 weeks of the completion of your tour, and you'll be able to join the thousands of travellers who have taken 2, 3, 4 or even 10 or more tours with us!

Discount cannot be combined with other offers or applied to 'Independent' style trips. Maximum discount value is \$100 USD (or equivalent currency). Valid for new bookings only. G Adventures reserves the right to withdraw or modify this offer at any time without notice. Limited to one discount per person.

Does G Adventures have an email newsletter I can subscribe to?

Our adventure travel e-newsletter is full of travel news, trip information, interesting stories and contests. To avoid missing out on special offers and updates from G Adventures, subscribe at www.gadventures.com/newsletters/

Stay current on how our company invests in our global community through our foundation – Planeterra. Sign up for [Planeterra's monthly news](#) to learn more about how to give back and support the people and places we love to visit.

How old must I be to join this trip?

Minimum age of 15 years for this trip.

Are international flights included in this trip?

No, international flights are generally not included in the price of your tour.

However, on some combo tours travelling between two different countries, international flights are included as part of the itinerary and price of the tour. Please speak to your GCO or booking agent for further details.

In addition, check-in times and baggage allowances/restrictions vary by airline and can change at any time. For the most up-to-date information for your flight, please contact your airline. We recommend checking in online in advance to avoid potential delays at the airport.

What should LGBTQ+ travellers know about safety and travel considerations on this trip?

The safety and well-being of all of our travelers is a priority at G Adventures and that includes our travelers who identify as part of the LGBTQ+ community. We recognize that there are specific concerns and questions you may have about your adventure in terms of safety and security. We encourage you to visit our [LGBTQ+ page](#) for useful resources to ensure you feel safe and comfortable throughout the duration of your trip. The Equaldex tool linked on this page can be of particular help when deciding where you may want to visit next.

Dossier Disclaimer

The information in this trip details document has been compiled with care and is provided in good faith. However it is subject to change, and does not form part of the contract between the client and the operator. The itinerary featured is correct at time of printing. It may differ slightly to the one in the brochure. Occasionally our itineraries change as we make improvements that stem from past travellers, comments and our own research. Sometimes it can be a small change like adding an extra meal along the itinerary. Sometimes the change may result in us altering the tour for the coming year. Ultimately, our goal is to provide you with the most rewarding experience. Please note that our brochure is usually released in November each year. If you have booked from the previous brochure you may find there have been some changes to the itinerary.

VERY IMPORTANT: Please ensure that you print a final copy of your Trip Details to review a couple of days prior to travel, in case there have been changes that affect your plans.

Itinerary Disclaimer

While it is our intention to adhere to the route described below, there is a certain amount of flexibility built into the itinerary and on occasion it may be necessary, or desirable to make alterations. The itinerary is brief, as we never know exactly where our journey will take us. Due to our style of travel and the regions we visit, travel can be unpredictable. The Trip Details document is a general guide to the tour and region and any mention of specific destinations or wildlife is by no means a guarantee that they will be visited or encountered. Aboard expedition trips visits to research stations depend on final permission.

Additionally, any travel times listed are approximations only and subject to vary due to local circumstances.